



ELECTRONIC COPY

LABORATORY GROWN DIAMOND REPORT

September 27, 2025
IGI Report Number LG737541890
Description LABORATORY GROWN DIAMOND
Shape and Cutting Style CUT CORNERED RECTANGULAR MODIFIED BRILLIANT
Measurements 10.07 X 6.96 X 4.75 MM

GRADING RESULTS

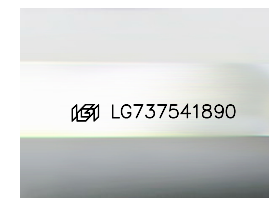
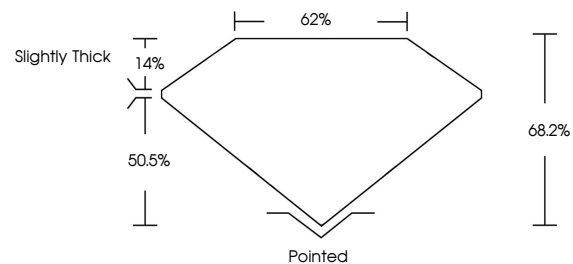
Carat Weight 2.97 CARATS
Color Grade D
Clarity Grade VVS 2

ADDITIONAL GRADING INFORMATION

Polish EXCELLENT
Symmetry EXCELLENT
Fluorescence NONE
Inscription(s) LG737541890

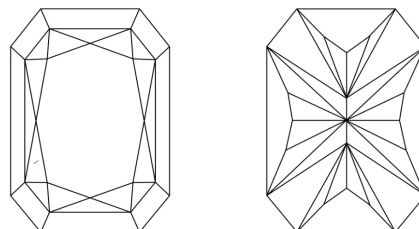
Comments: This Laboratory Grown Diamond was created by Chemical Vapor Deposition (CVD) growth process.
Type IIa

PROPORTIONS



Sample Image Used

CLARITY CHARACTERISTICS



KEY TO SYMBOLS

Red symbols indicate internal characteristics.
Green symbols indicate external characteristics.

COLOR

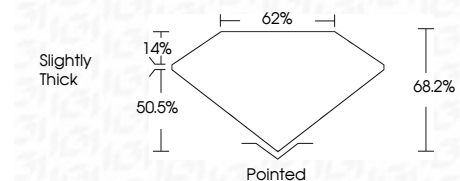
D E F G H I J Faint Very Light Light

CLARITY

IF WS¹⁻² VS¹⁻² SI¹⁻² I¹⁻³
Internally Flawless Very Very Slightly Included Very Slightly Included Slightly Included Included



September 27, 2025
IGI Report Number LG737541890
Description LABORATORY GROWN DIAMOND
Shape and Cutting Style CUT CORNERED RECTANGULAR MODIFIED BRILLIANT
Measurements 10.07 X 6.96 X 4.75 MM
GRADING RESULTS
Carat Weight 2.97 CARATS
Color Grade D
Clarity Grade VVS 2



ADDITIONAL GRADING INFORMATION

Polish EXCELLENT
Symmetry EXCELLENT
Fluorescence NONE
Inscription(s) LG737541890
Comments: This Laboratory Grown Diamond was created by Chemical Vapor Deposition (CVD) growth process.
Type IIa



September 27, 2025
IGI Report No LG737541890
CUT CORNERED RECT. MODIFIED BRILLIANT
10.07 X 6.96 X 4.75 MM
2.97 CARATS
D
VVS 2
68.2%
62%
Slightly Thick
Pointed
EXCELLENT
EXCELLENT
NONE
Inscription(s) LG737541890
Comments: This Laboratory Grown Diamond was created by Chemical Vapor Deposition (CVD) growth process.
Type IIa