



ELECTRONIC COPY

LG737539073
Report verification at igi.org



September 26, 2025

IGI Report Number **LG737539073**

Description **LABORATORY GROWN DIAMOND**

Shape and Cutting Style **EMERALD CUT**

Measurements **10.28 X 7.17 X 4.59 MM**

GRADING RESULTS

Carat Weight **3.45 CARATS**

Color Grade **D**

Clarity Grade **VVS 2**

September 26, 2025
IGI Report Number **LG737539073**
Description **LABORATORY GROWN DIAMOND**
Shape and Cutting Style **EMERALD CUT**
Measurements **10.28 X 7.17 X 4.59 MM**

GRADING RESULTS

Carat Weight **3.45 CARATS**

Color Grade **D**

Clarity Grade **VVS 2**

ADDITIONAL GRADING INFORMATION

Polish **EXCELLENT**

Symmetry **EXCELLENT**

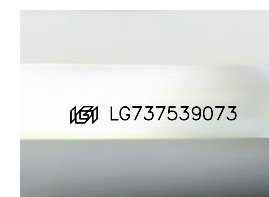
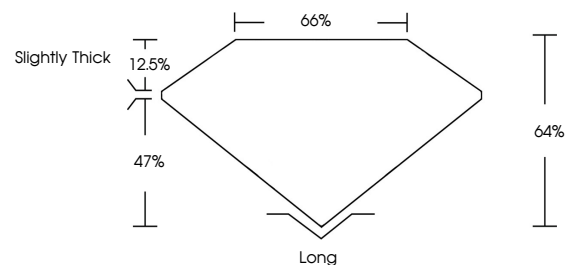
Fluorescence **NONE**

Inscription(s) **LG737539073**

Comments: As Grown - No indication of post-growth treatment.

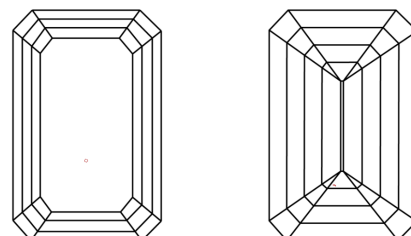
This Laboratory Grown Diamond was created by High Pressure High Temperature (HPHT) growth process. Type II

PROPORTIONS



Sample Image Used

CLARITY CHARACTERISTICS



KEY TO SYMBOLS

Red symbols indicate internal characteristics.
Green symbols indicate external characteristics.

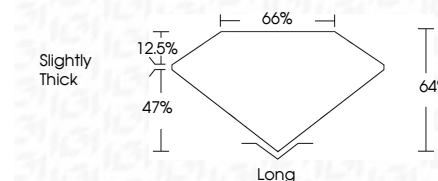
COLOR

D E F G H I J Faint Very Light Light

CLARITY

IF WS¹⁻² VS¹⁻² SI¹⁻² I¹⁻³

Internally Flawless Very Very Slightly Included Very Slightly Included Slightly Included Included



ADDITIONAL GRADING INFORMATION

Polish **EXCELLENT**

Symmetry **EXCELLENT**

Fluorescence **NONE**

Inscription(s) **LG737539073**

Comments: As Grown - No indication of post-growth treatment.

This Laboratory Grown Diamond was created by High Pressure High Temperature (HPHT) growth process. Type II



IGI



September 26, 2025
IGI Report No **LG737539073**
EMERALD CUT
10.28 X 7.17 X 4.59 MM
Carat Weight **3.45 CARATS**
Color Grade **D**
Clarity Grade **VVS 2**
Table **66%**
Girdle **65%**
Culet **Slightly Thick**
Polish **EXCELLENT**
Symmetry **EXCELLENT**
Fluorescence **NONE**
Inscription(s) **LG737539073**
Comments: As Grown - No indication of post-growth treatment. This Laboratory Grown Diamond was created by High Pressure High Temperature (HPHT) growth process. Type II