



**ELECTRONIC COPY**

## LABORATORY GROWN DIAMOND REPORT

September 29, 2025	
IGI Report Number	LG737539007
Description	LABORATORY GROWN DIAMOND
Shape and Cutting Style	ROUND BRILLIANT
Measurements	9.79 - 9.84 X 6.12 MM

## GRADING RESULTS

Carat Weight	3.62 CARATS
Color Grade	D
Clarity Grade	VVS 1
Cut Grade	IDEAL

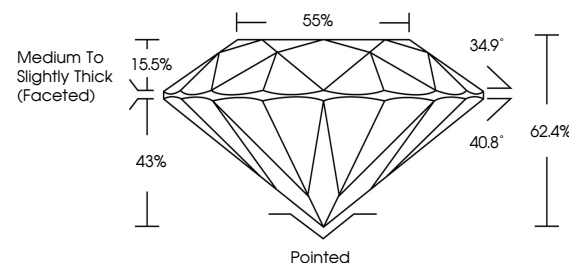
### ADDITIONAL GRADING INFORMATION

Polish	EXCELLENT
Symmetry	EXCELLENT
Fluorescence	NONE
Inscription(s)	151 LG737539007

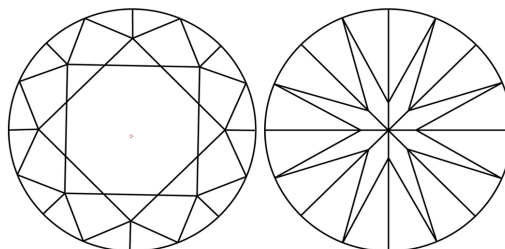
Comments: As Grown - No indication of post-growth treatment.  
This Laboratory Grown Diamond was created by High Pressure High Temperature (HPHT) growth process.  
Type II

LG737539007  
Report verification at [igi.org](https://igi.org)

## PROPORTIONS

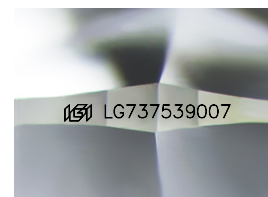


## CLARITY CHARACTERISTICS



### KEY TO SYMBOLS

Red symbols indicate internal characteristics.  
Green symbols indicate external characteristics.



Sample Image Used

COLOR

D E F G H I J Faint Very Light Light

## CLARITY

IF                      VS<sup>1-2</sup>                      VS<sup>1-2</sup>                      SI<sup>1-2</sup>                      I<sup>1-3</sup>

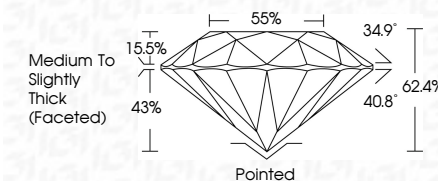
Internally Flawless	Very Very Slightly Included	Very Slightly Included	Slightly Included	Included
------------------------	--------------------------------	---------------------------	----------------------	----------



September 29, 2025	
IGI Report Number	LG737539007
Description	LABORATORY GROWN DIAMOND
Shape and Cutting Style	ROUND BRILLIANT
Measurements	9.79 - 9.84 X 6.12 MM

## GRADING RESULTS

Carat Weight	3.62 CARATS
Color Grade	D
Clarity Grade	VVS 1
Cut Grade	IDEAL



### ADDITIONAL GRADING INFORMATION

Polish	EXCELLENT
Symmetry	EXCELLENT
Fluorescence	NONE
Inscription(s)	 LG737539007
Comments: As Grown - No indication of post-growth treatment.	
This Laboratory Grown Diamond was created by High Pressure High Temperature (HPHT) growth process.	
Type II	



© IGI 2020, International Gemological Institute

FD - 10 20



THIS DOCUMENT WAS PRODUCED WITH THE FOLLOWING SECURITY MEASURES: SPECIAL DOCUMENT PAPER, INK SCREENS, WATERMARK, BACKGROUND DESIGNS, HOLOGRAM AND OTHER SECURITY FEATURES NOT LISTED AND DO EXCEED DOCUMENT SECURITY INDUSTRY GUIDELINES

**www.igi.org**

September 29, 2025  
 IGI Report No LG737539007  
 ROUND BRILLIANT

<b>7.79 - 9.84 X 6.12 MM</b>		<b>3.62 CARATS</b>
Carat Weight	VVS 1	IDEAL
Color Grade	Colorless	62.4%
Clarity Grade	Very Slightly Included	55%
Depth	82.1%	Medium to Slightly Thick (Faceted)
Table	95.7%	Pointed
Girdle	4.0 mm	EXCELLENT
Culet	None	EXCELLENT
Polish	Excellent	NONE
Symmetry	Excellent	
Fluorescence	None	

**Comments:**  
As Grown - No indication of post-growth treatment.