



ELECTRONIC COPY

LG737538999
Report verification at igi.org



September 30, 2025
IGI Report Number **LG737538999**
Description **LABORATORY GROWN DIAMOND**

Shape and Cutting Style **CUT CORNERED
RECTANGULAR MODIFIED
BRILLIANT**

Measurements **10.35 X 7.21 X 4.90 MM**

GRADING RESULTS

Carat Weight **3.05 CARATS**
Color Grade **D**
Clarity Grade **INTERNALLY FLAWLESS**

September 30, 2025
IGI Report Number **LG737538999**
Description **LABORATORY GROWN DIAMOND**
Shape and Cutting Style **CUT CORNERED RECTANGULAR
MODIFIED BRILLIANT**
Measurements **10.35 X 7.21 X 4.90 MM**

GRADING RESULTS

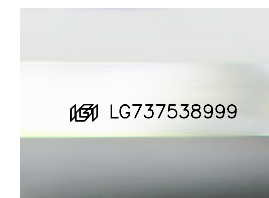
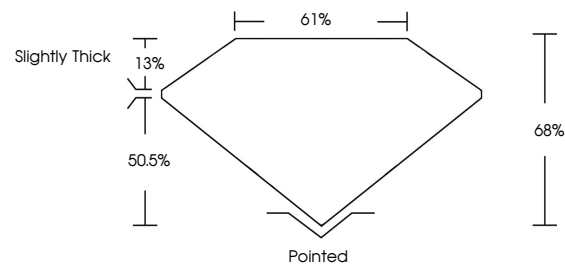
Carat Weight **3.05 CARATS**
Color Grade **D**
Clarity Grade **INTERNALLY FLAWLESS**

ADDITIONAL GRADING INFORMATION

Polish **EXCELLENT**
Symmetry **EXCELLENT**
Fluorescence **NONE**
Inscription(s) **IGI LG737538999**

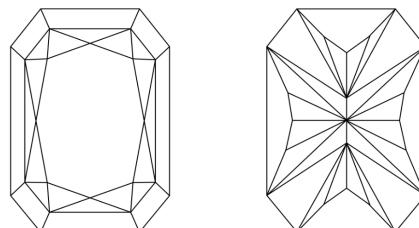
Comments: As Grown - No indication of post-growth treatment.
This Laboratory Grown Diamond was created by High Pressure High Temperature (HPHT) growth process.
Type II

PROPORTIONS



Sample Image Used

CLARITY CHARACTERISTICS



KEY TO SYMBOLS

Red symbols indicate internal characteristics.
Green symbols indicate external characteristics.

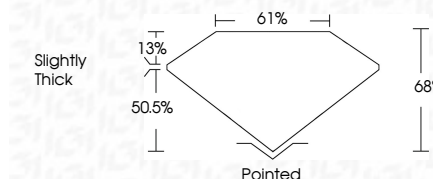
COLOR

D E F G H I J Faint Very Light Light

CLARITY

IF VS¹⁻² VS¹⁻² SI¹⁻² I¹⁻³

Internally Flawless Very Very Slightly Included Very Slightly Included Slightly Included Included



ADDITIONAL GRADING INFORMATION

Polish **EXCELLENT**
Symmetry **EXCELLENT**
Fluorescence **NONE**
Inscription(s) **IGI LG737538999**
Comments: As Grown - No indication of post-growth treatment.
This Laboratory Grown Diamond was created by High Pressure High Temperature (HPHT) growth process.
Type II



IGI



September 30, 2025
IGI Report No LG737538999
CUT CORNERED RECT. MODIFIED BRILLIANT
10.35 X 7.21 X 4.90 MM
3.05 CARATS
D
LF
68%
61%
Slightly Thick
Pointed
EXCELLENT
EXCELLENT
NONE
IGI LG737538999

Comments: As Grown - No indication of post-growth treatment.
This Laboratory Grown Diamond was created by High Pressure High Temperature (HPHT) growth process.
Type II