

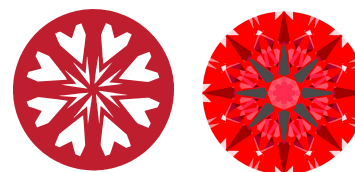


**INTERNATIONAL
GEMOLOGICAL
INSTITUTE**

LG737537525
Report verification at igi.org

LIGHT PERFORMANCE REPORT

Light Performance Grade: Exceptional



Structured Light Environment Representation



COLOR



CLARITY



September 26, 2025
 IGI Report Number **LG737537525**
 Description **LABORATORY GROWN DIAMOND**
 Shape and Cutting Style **ROUND BRILLIANT**
 Measurements **9.45 - 9.50 X 5.73 MM**
GRADING RESULTS
 Carat Weight **3.13 CARATS**
 Color Grade **D**
 Clarity Grade **VVS 1**
 Cut Grade **IDEAL**

**ELECTRONIC COPY
LABORATORY GROWN DIAMOND REPORT**

September 26, 2025
 IGI Report Number **LG737537525**
 Description **LABORATORY GROWN DIAMOND**
 Shape and Cutting Style **ROUND BRILLIANT**
 Measurements **9.45 - 9.50 x 5.73 mm**

GRADING RESULTS

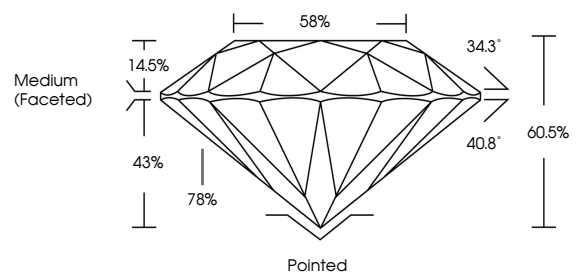
Carat Weight **3.13 CARATS**
 Color Grade **D**
 Clarity Grade **VVS 1**
 Cut Grade **IDEAL**

ADDITIONAL GRADING INFORMATION

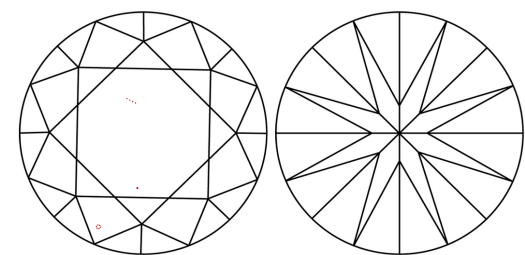
Polish **EXCELLENT**
 Symmetry **EXCELLENT**
 Fluorescence **NONE**
 Inscription(s) **IGI LG737537525**

Comments: HEARTS & ARROWS
 This Laboratory Grown Diamond was created by Chemical Vapor Deposition (CVD) growth process. Type IIa

PROPORTIONS

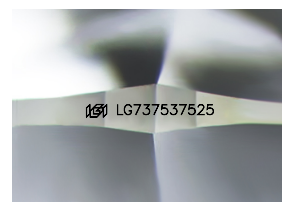


CLARITY CHARACTERISTICS



KEY TO SYMBOLS

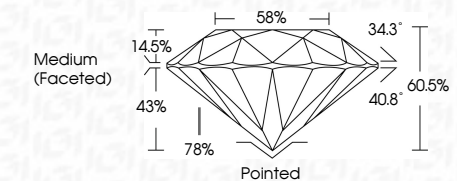
Red symbols indicate internal characteristics.
 Green symbols indicate external characteristics.



Sample Image Used

www.igi.org

© IGI 2020, International Gemological Institute FD - 10 20



ADDITIONAL GRADING INFORMATION

Polish **EXCELLENT**
 Symmetry **EXCELLENT**
 Fluorescence **NONE**
 Inscription(s) **IGI LG737537525**
 Comments: HEARTS & ARROWS
 This Laboratory Grown Diamond was created by Chemical Vapor Deposition (CVD) growth process. Type IIa



IGI

September 26, 2025	IGI Report No. LG737537525	ROUND BRILLIANT	3.13 CARATS	D	VVS 1	IDEAL	60.5%	58%	Medium (Faceted)	Pointed	EXCELLENT	EXCELLENT	NONE	IGI LG737537525
9.45 - 9.50 X 5.73 MM	Carat Weight	Color Grade	Clarity Grade	Cut Grade	Depth	Table	Grade	Culet	Polish	Symmetry	Fluorescence	Inscription(s)	Comments: HEARTS & ARROWS This Laboratory Grown Diamond was created by Chemical Vapor Deposition (CVD) growth process. Type IIa	