



ELECTRONIC COPY

LG737536196
Report verification at igi.org



September 23, 2025

IGI Report Number **LG737536196**

Description **LABORATORY GROWN DIAMOND**

Shape and Cutting Style **ROUND BRILLIANT**

Measurements **9.38 - 9.41 X 5.67 MM**

GRADING RESULTS

Carat Weight **3.09 CARATS**

Color Grade **E**

Clarity Grade **VVS 2**

Cut Grade **IDEAL**

September 23, 2025
IGI Report Number **LG737536196**
Description **LABORATORY GROWN DIAMOND**
Shape and Cutting Style **ROUND BRILLIANT**
Measurements **9.38 - 9.41 X 5.67 MM**

GRADING RESULTS

Carat Weight **3.09 CARATS**

Color Grade **E**

Clarity Grade **VVS 2**

Cut Grade **IDEAL**

ADDITIONAL GRADING INFORMATION

Polish **EXCELLENT**

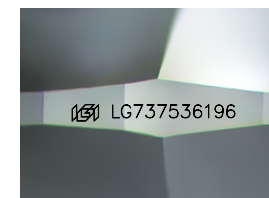
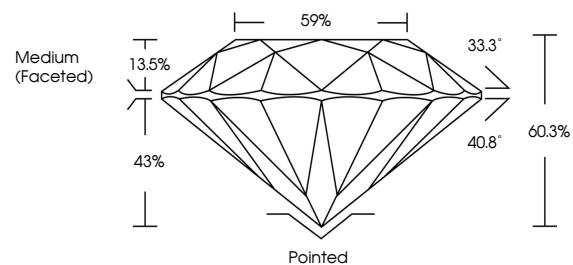
Symmetry **EXCELLENT**

Fluorescence **NONE**

Inscription(s) **LG737536196**

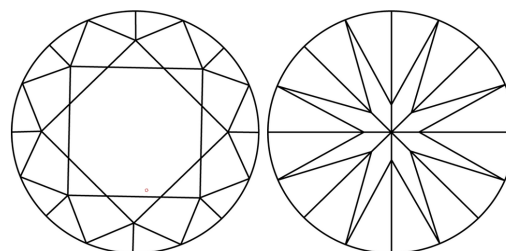
Comments: This Laboratory Grown Diamond was created by Chemical Vapor Deposition (CVD) growth process.
Type IIa

PROPORTIONS



Sample Image Used

CLARITY CHARACTERISTICS



KEY TO SYMBOLS

Red symbols indicate internal characteristics.
Green symbols indicate external characteristics.

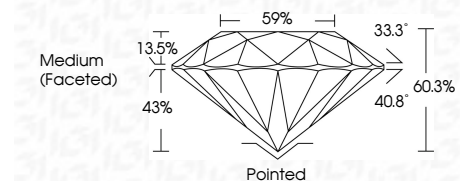
COLOR

D E F G H I J Faint Very Light Light

CLARITY

IF WS¹⁻² VS¹⁻² SI¹⁻² I¹⁻³

Internally Flawless Very Very Slightly Included Very Slightly Included Slightly Included Included



ADDITIONAL GRADING INFORMATION

Polish **EXCELLENT**

Symmetry **EXCELLENT**

Fluorescence **NONE**

Inscription(s) **LG737536196**

Comments: This Laboratory Grown Diamond was created by Chemical Vapor Deposition (CVD) growth process.
Type IIa



IGI



September 23, 2025	IGI Report No LG737536196	3.09 CARATS	E	Pointed	EXCELLENT	EXCELLENT	NONE	LG737536196
ROUND BRILLIANT	9.38 - 9.41 X 5.67 MM	Color Grade	VVS 2	Medium (Faceted)	IDEAL	60.3%	59%	
		Clarity Grade	IDEAL					
		Depth	43%					
		Table	59%					
		Grade						
		Polish	EXCELLENT					
		Symmetry	EXCELLENT					
		Fluorescence	NONE					
		Inscription(s)						

Comments: This Laboratory Grown Diamond was created by Chemical Vapor Deposition (CVD) growth process.
Type IIa