

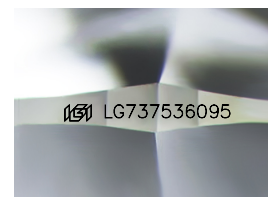
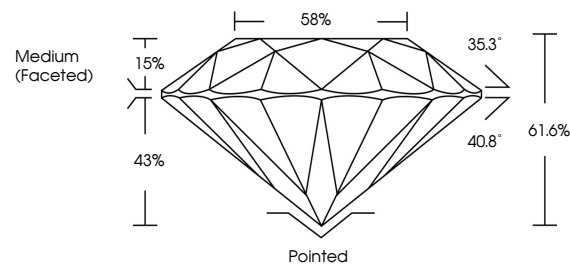


ELECTRONIC COPY

LABORATORY GROWN DIAMOND REPORT

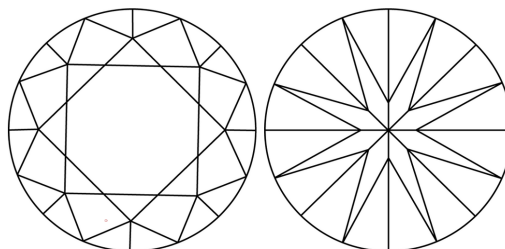
LG737536095
Report verification at igi.org

PROPORTIONS



Sample Image Used

CLARITY CHARACTERISTICS



KEY TO SYMBOLS

Red symbols indicate internal characteristics.
Green symbols indicate external characteristics.

COLOR

D E F G H I J Faint Very Light Light

CLARITY

IF WS¹⁻² VS¹⁻² S¹⁻² |¹⁻³

Internally Flawless	Very Very Slightly Included	Very Slightly Included	Slightly Included	Included
------------------------	--------------------------------	---------------------------	----------------------	----------

LABORATORY GROWN DIAMOND REPORT



September 25, 2025

IGI Report Number **LG737536095**Description **LABORATORY GROWN DIAMOND**Shape and Cutting Style **ROUND BRILLIANT**

Measurements 9.31 - 9.33 X 5.74 MM

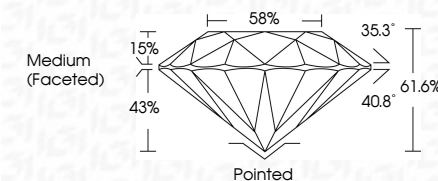
GRADING RESULTS

Carat Weight **3.10 CARATS**

Color Grade F

Clarity Grade **VVS 2**

Cut Grade **IDEAL**



ADDITIONAL GRADING INFORMATION

Polish **EXCELLENT**Symmetry **EXCELLENT**Fluorescence **NONE**Inscription(s) LG737536095

Comments: This Laboratory Grown Diamond was created by Chemical Vapor Deposition (CVD) growth process.
Type IIa



© IGI 2020, International Gemological Institute

FD - 10 20



THIS DOCUMENT WAS PRODUCED WITH THE FOLLOWING SECURITY MEASURES: SPECIAL DOCUMENT PAPER, INK SCREENS, WATERMARK, BACKGROUND DESIGNS, HOLOGRAM, AND OTHER SECURITY FEATURES NOT LISTED AND DO EXCEED DOCUMENT SECURITY INDUSTRY GUIDELINES.

www.igi.org

September 25, 2025
 IGI Report No LG737536095
 ROUND BRILLIANT

ROUND BRILLIANT	
9.31 - 9.33 X 5.74 MM	
Carat Weight	3.10 CARATS
Color Grade	F
Clarity Grade	VVS 2
Cut Grade	IDEAL
Depth	61.6%
Table	59%
Girdle	Medium (Faceted)

	Pointed	EXCELLENT	EXCELLENT	NONE
Culet				
Polish				
Symmetry				
Fluorescence				

Comments:
This Laboratory Grown Diamond was created by Chemical Vapor Deposition (CVD) growth process.