



ELECTRONIC COPY

LG737536067
Report verification at igi.org



September 24, 2025

IGI Report Number **LG737536067**

Description **LABORATORY GROWN DIAMOND**

Shape and Cutting Style **ROUND BRILLIANT**

Measurements **9.38 - 9.41 X 5.69 MM**

GRADING RESULTS

Carat Weight **3.09 CARATS**

Color Grade **F**

Clarity Grade **VVS 2**

Cut Grade **IDEAL**

September 24, 2025
IGI Report Number **LG737536067**
Description **LABORATORY GROWN DIAMOND**
Shape and Cutting Style **ROUND BRILLIANT**
Measurements **9.38 - 9.41 X 5.69 MM**

GRADING RESULTS

Carat Weight **3.09 CARATS**

Color Grade **F**

Clarity Grade **VVS 2**

Cut Grade **IDEAL**

ADDITIONAL GRADING INFORMATION

Polish **EXCELLENT**

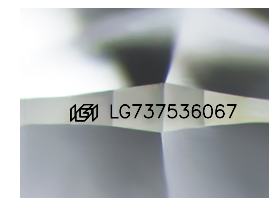
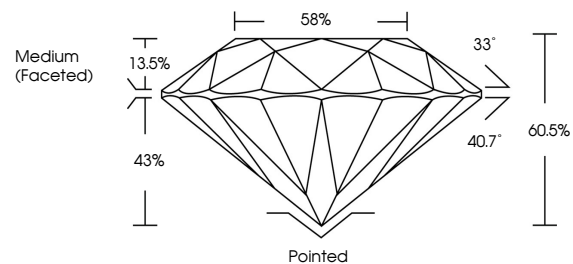
Symmetry **EXCELLENT**

Fluorescence **NONE**

Inscription(s) **IGI LG737536067**

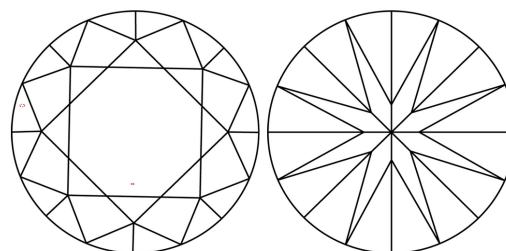
Comments: This Laboratory Grown Diamond was created by Chemical Vapor Deposition (CVD) growth process.
Type IIa

PROPORTIONS



Sample Image Used

CLARITY CHARACTERISTICS



KEY TO SYMBOLS

Red symbols indicate internal characteristics.
Green symbols indicate external characteristics.

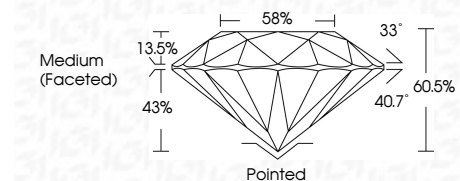
COLOR

D E F G H I J Faint Very Light Light

CLARITY

IF WS¹⁻² VS¹⁻² SI¹⁻² I¹⁻³

Internally Flawless Very Very Slightly Included Very Slightly Included Slightly Included Included



ADDITIONAL GRADING INFORMATION

Polish **EXCELLENT**

Symmetry **EXCELLENT**

Fluorescence **NONE**

Inscription(s) **IGI LG737536067**

Comments: This Laboratory Grown Diamond was created by Chemical Vapor Deposition (CVD) growth process.
Type IIa



IGI



September 24, 2025	IGI Report No LG737536067	3.09 CARATS	F	Pointed	EXCELLENT	EXCELLENT	NONE	IGI LG737536067
9.38 - 9.41 X 5.69 MM	ROUND BRILLIANT	Carat Weight	VVS 2	Polish	EXCELLENT	EXCELLENT	NONE	IGI LG737536067
		Color Grade	IDEAL	Symmetry	EXCELLENT	EXCELLENT	NONE	IGI LG737536067
		Clarity Grade	60.05%	Fluorescence	EXCELLENT	EXCELLENT	NONE	IGI LG737536067
		Cut Grade	58%	Inscription(s)	EXCELLENT	EXCELLENT	NONE	IGI LG737536067
		Medium (Faceted)						

Comments: This Laboratory Grown Diamond was created by Chemical Vapor Deposition (CVD) growth process.
Type IIa