

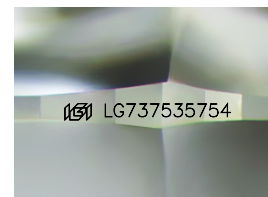
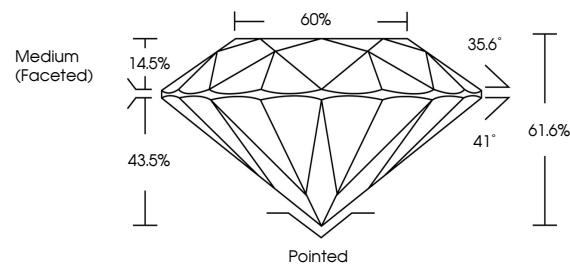


ELECTRONIC COPY

LABORATORY GROWN DIAMOND REPORT

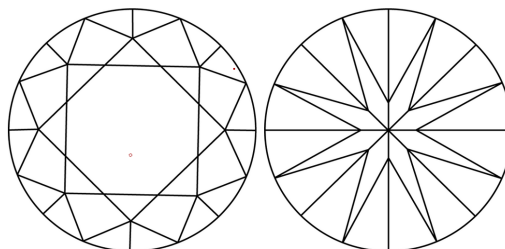
LG737535754
Report verification at igi.org

PROPORTIONS



Sample Image Used

CLARITY CHARACTERISTICS



KEY TO SYMBOLS

Red symbols indicate internal characteristics.
Green symbols indicate external characteristics.

COLOR

D E F G H I J Faint Very Light Light

CLARITY

IF WS¹⁻² VS¹⁻² SI¹⁻² |¹⁻³

Internally Flawless	Very Very Slightly Included	Very Slightly Included	Slightly Included	Included
------------------------	--------------------------------	---------------------------	----------------------	----------

LABORATORY GROWN DIAMOND REPORT



September 24, 2025

IGI Report Number **LG737535754**

Description	LABORATORY GROWN DIAMOND
-------------	--------------------------

Shape and Cutting Style **ROUND BRILLIANT**

Measurements	8.77 - 8.82 X 5.42 MM
--------------	-----------------------

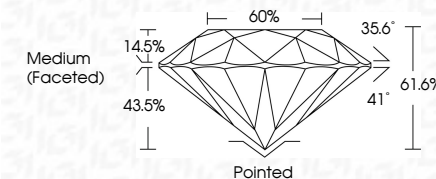
GRADING RESULTS

Carat Weight **2.60 CARATS**

Color Grade E

Clarity Grade **VVS 2**

Cut Grade **IDEAL**



ADDITIONAL GRADING INFORMATION

Polish **EXCELLENT**Symmetry **EXCELLENT**Fluorescence **NONE**Inscription(s) LG737535754

Comments: This Laboratory Grown Diamond was created by Chemical Vapor Deposition (CVD) growth process.
Type IIa



© IGI 2020, International Gemological Institute

FD - 10 20

www.igi.org

THIS DOCUMENT WAS PRODUCED WITH THE FOLLOWING SECURITY MEASURES: SPECIAL DOCUMENT PAPER, INK SCREENS, WATERMARK BACKGROUND DESIGNS, HOLOGRAM AND OTHER SECURITY FEATURES NOT LISTED AND DO EXCEED DOCUMENT SECURITY INDUSTRY GUIDELINES

September 24, 2025
IGI Report No LG737535754
ROUND BRILLIANT

ROUND BRILLIANT	8.77 - 8.82 X 5.42 MM	2.60 CARATS	E	VVS 2	IDEAL	61.6%	60%	Medium (Excellent)
	Carat Weight			Clarity Grade	Cut Grade	Depth	Table	Girdle
	Color Grade							

	Pointed	EXCELLENT	EXCELLENT	NONE
Culet				
Polish				
Symmetry				
Fluorescence				

Comments:
This Laboratory Grown Diamond was created by Chemical Vapor Deposition (CVD) growth process.