



**ELECTRONIC COPY**

LG737535661  
Report verification at igi.org



September 23, 2025

IGI Report Number **LG737535661**

Description **LABORATORY GROWN DIAMOND**

Shape and Cutting Style **ROUND BRILLIANT**

Measurements **9.31 - 9.36 X 5.74 MM**

**GRADING RESULTS**

Carat Weight **3.09 CARATS**

Color Grade **E**

Clarity Grade **VVS 2**

Cut Grade **IDEAL**

September 23, 2025  
IGI Report Number **LG737535661**  
Description **LABORATORY GROWN DIAMOND**  
Shape and Cutting Style **ROUND BRILLIANT**  
Measurements **9.31 - 9.36 X 5.74 MM**

**GRADING RESULTS**

Carat Weight **3.09 CARATS**

Color Grade **E**

Clarity Grade **VVS 2**

Cut Grade **IDEAL**

**ADDITIONAL GRADING INFORMATION**

Polish **EXCELLENT**

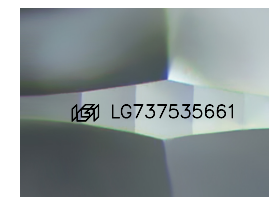
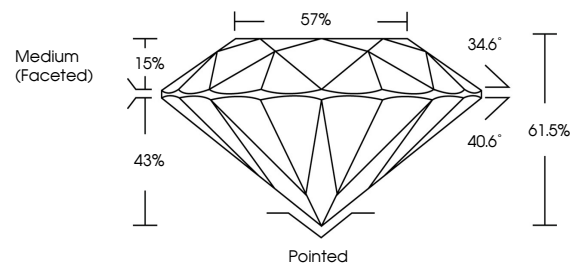
Symmetry **EXCELLENT**

Fluorescence **NONE**

Inscription(s) **LG737535661**

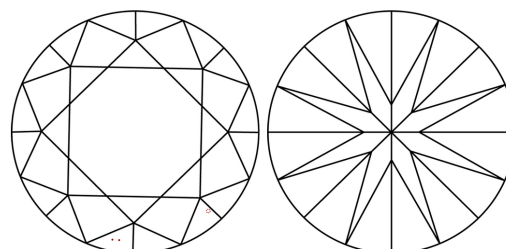
Comments: This Laboratory Grown Diamond was created by Chemical Vapor Deposition (CVD) growth process.  
Type IIa

**PROPORTIONS**



Sample Image Used

**CLARITY CHARACTERISTICS**



**KEY TO SYMBOLS**

Red symbols indicate internal characteristics.  
Green symbols indicate external characteristics.

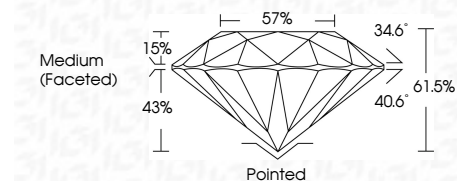
**COLOR**

D E F G H I J Faint Very Light Light

**CLARITY**

IF WS<sup>1-2</sup> VS<sup>1-2</sup> SI<sup>1-2</sup> I<sup>1-3</sup>

Internally Flawless Very Very Slightly Included Very Slightly Included Slightly Included Included



**ADDITIONAL GRADING INFORMATION**

Polish **EXCELLENT**

Symmetry **EXCELLENT**

Fluorescence **NONE**

Inscription(s) **LG737535661**

Comments: This Laboratory Grown Diamond was created by Chemical Vapor Deposition (CVD) growth process.  
Type IIa



**IGI**



September 23, 2025  
IGI Report No LG737535661  
**ROUND BRILLIANT**

**3.09 CARATS**  
E  
Color Grade

**VVS 2**  
IDEAL  
61.5%  
57%  
Medium (Faceted)  
Depth  
Table  
Girdle

**Pointed**  
EXCELLENT  
EXCELLENT  
NONE  
NONE  
IGI LG737535661  
Inscription(s)

Comments: This Laboratory Grown Diamond was created by Chemical Vapor Deposition (CVD) growth process.  
Type IIa