



INTERNATIONAL GEMOLOGICAL INSTITUTE

ELECTRONIC COPY

LABORATORY GROWN DIAMOND REPORT

October 14, 2025

IGI Report Number

LG737532231

Description

LABORATORY GROWN DIAMOND

Shape and Cutting Style

ROUND BRILLIANT

Measurements

4.36 - 4.44 X 2.74 MM

GRADING RESULTS

Carat Weight

0.33 CARAT

Color Grade

FANCY LIGHT YELLOW

Clarity Grade

VS 2

Cut Grade

VERY GOOD

ADDITIONAL GRADING INFORMATION

Polish

VERY GOOD

Symmetry

VERY GOOD

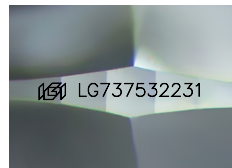
Fluorescence

NONE

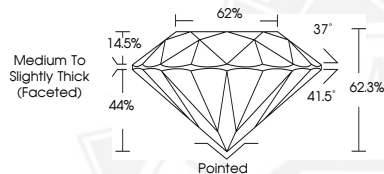
Inscription(s)

IGI LG737532231

Comments: This Laboratory Grown Diamond was created by Chemical Vapor Deposition (CVD) growth process.



Sample Image Used



October 14, 2025

IGI Report Number LG737532231

ROUND BRILLIANT

LABORATORY GROWN DIAMOND

4.36 - 4.44 X 2.74 MM

Carat Weight 0.33 CARAT

Color Grade FANCY LIGHT YELLOW

Clarity Grade VS 2

Cut Grade VERY GOOD

Polish VERY GOOD

Symmetry VERY GOOD

Fluorescence NONE

Inscription(s) IGI LG737532231

Comments: This Laboratory Grown Diamond was created by Chemical Vapor Deposition (CVD) growth process.



October 14, 2025

IGI Report Number LG737532231

ROUND BRILLIANT

LABORATORY GROWN DIAMOND

4.36 - 4.44 X 2.74 MM

Carat Weight 0.33 CARAT

Color Grade FANCY LIGHT YELLOW

Clarity Grade VS 2

Cut Grade VERY GOOD

Polish VERY GOOD

Symmetry VERY GOOD

Fluorescence NONE

Inscription(s) IGI LG737532231

Comments: This Laboratory Grown Diamond was created by Chemical Vapor Deposition (CVD) growth process.



THIS DOCUMENT WAS PRODUCED WITH THE FOLLOWING SECURITY MEASURES: SPECIAL DOCUMENT PAPER, INK SCREENS, WATERMARK, BACKGROUND DESIGNS, HOLOGRAM AND OTHER SECURITY FEATURES NOT LISTED AND DO EXCEED DOCUMENT SECURITY INDUSTRY GUIDELINES.

For terms & conditions and to verify this report, please visit www.igi.org