



ELECTRONIC COPY

LG737517232 Report verification at igi.org



September 26, 2025 IGI Report Number LG737517232 Description LABORATORY GROWN DIAMOND Shape and Cutting Style CUSHION MODIFIED BRILLIANT Measurements 14.91 X 11.05 X 7.15 MM GRADING RESULTS Carat Weight 9.05 CARATS Color Grade E Clarity Grade VVS 2

LABORATORY GROWN DIAMOND REPORT

September 26, 2025 IGI Report Number LG737517232 Description LABORATORY GROWN DIAMOND Shape and Cutting Style CUSHION MODIFIED BRILLIANT Measurements 14.91 X 11.05 X 7.15 MM

GRADING RESULTS

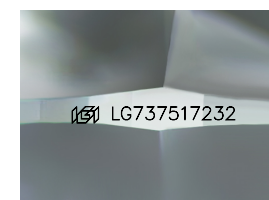
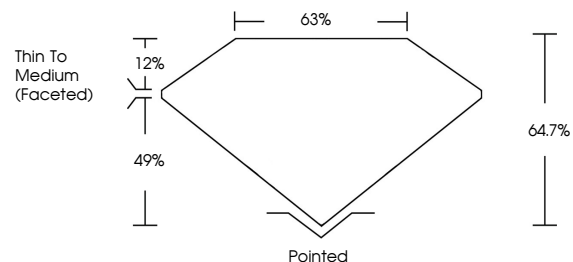
Carat Weight 9.05 CARATS Color Grade E Clarity Grade VVS 2

ADDITIONAL GRADING INFORMATION

Polish EXCELLENT Symmetry EXCELLENT Fluorescence NONE Inscription(s) IGI LG737517232

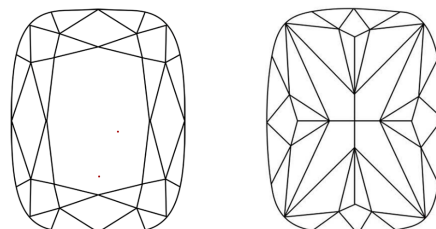
Comments: This Laboratory Grown Diamond was created by Chemical Vapor Deposition (CVD) growth process. Type IIa

PROPORTIONS



Sample Image Used

CLARITY CHARACTERISTICS



KEY TO SYMBOLS

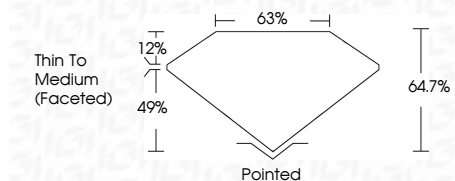
Red symbols indicate internal characteristics. Green symbols indicate external characteristics.

COLOR

D E F G H I J Faint Very Light Light

CLARITY

IF WS 1-2 VS 1-2 SI 1-2 I 1-3 Internally Flawless Very Very Slightly Included Very Slightly Included Slightly Included Included



ADDITIONAL GRADING INFORMATION

Polish EXCELLENT Symmetry EXCELLENT Fluorescence NONE Inscription(s) IGI LG737517232 Comments: This Laboratory Grown Diamond was created by Chemical Vapor Deposition (CVD) growth process. Type IIa



September 26, 2025 IGI Report No LG737517232 CUSHION MODIFIED BRILLIANT 14.91 X 11.05 X 7.15 MM 9.05 CARATS E VS 2 64.7% 63% Thin To Medium (Faceted) Pointed EXCELLENT EXCELLENT NONE NONE IGI LG737517232 Comments: This Laboratory Grown Diamond was created by Chemical Vapor Deposition (CVD) growth process. Type IIa