



ELECTRONIC COPY

LG737516539
Report verification at igi.org



September 24, 2025

IGI Report Number **LG737516539**

Description **LABORATORY GROWN DIAMOND**

Shape and Cutting Style **ROUND BRILLIANT**

Measurements **9.46 - 9.50 X 5.87 MM**

GRADING RESULTS

Carat Weight **3.27 CARATS**

Color Grade **E**

Clarity Grade **VS 1**

Cut Grade **IDEAL**

September 24, 2025
IGI Report Number **LG737516539**
Description **LABORATORY GROWN DIAMOND**
Shape and Cutting Style **ROUND BRILLIANT**
Measurements **9.46 - 9.50 X 5.87 MM**

GRADING RESULTS

Carat Weight **3.27 CARATS**

Color Grade **E**

Clarity Grade **VS 1**

Cut Grade **IDEAL**

ADDITIONAL GRADING INFORMATION

Polish **EXCELLENT**

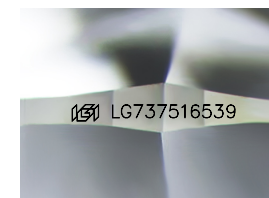
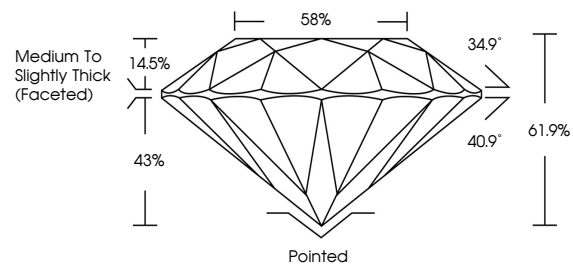
Symmetry **EXCELLENT**

Fluorescence **NONE**

Inscription(s) **IGI LG737516539**

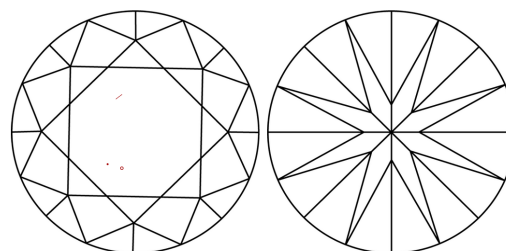
Comments: This Laboratory Grown Diamond was created by Chemical Vapor Deposition (CVD) growth process.
Type IIa

PROPORTIONS



Sample Image Used

CLARITY CHARACTERISTICS



KEY TO SYMBOLS

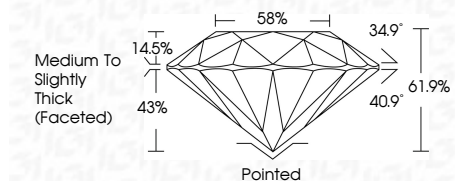
Red symbols indicate internal characteristics.
Green symbols indicate external characteristics.

COLOR

D E F G H I J Faint Very Light Light

CLARITY

IF	VS ¹⁻²	VS ¹⁻²	SI ¹⁻²	I ¹⁻³
Internally Flawless	Very Very Slightly Included	Very Slightly Included	Slightly Included	Included



ADDITIONAL GRADING INFORMATION

Polish **EXCELLENT**

Symmetry **EXCELLENT**

Fluorescence **NONE**

Inscription(s) **IGI LG737516539**

Comments: This Laboratory Grown Diamond was created by Chemical Vapor Deposition (CVD) growth process.
Type IIa



IGI



September 24, 2025
IGI Report No LG737516539
ROUND BRILLIANT

3.27 CARATS
E

9.46 - 9.50 X 5.87 MM
61.9%

VS 1
IDEAL

EXCELLENT
EXCELLENT

NONE
NONE

IGI LG737516539

Medium To Slightly Thick (Faceted)

Pointed
EXCELLENT
EXCELLENT
NONE
IGI LG737516539

Comments: This Laboratory Grown Diamond was created by Chemical Vapor Deposition (CVD) growth process.
Type IIa