



November 19, 2025

**IGI Report Number** LG737509179  
**HEART MODIFIED BRILLIANT**  
**LABORATORY GROWN DIAMOND**  
**5.06 X 6.23 X 3.39 MM**

**Carat Weight** 0.79 CARAT  
**Color Grade** FANCY INTENSE  
**YELLOW**

**Clarity Grade** VVS 2  
**Polish** GOOD  
**Symmetry** VERY GOOD  
**Fluorescence** NONE  
**Inscription(s)** IGI LG737509179

**Comments:** As Grown - No indication of post-growth treatment. This Laboratory Grown Diamond was created by High Pressure High Temperature (HPHT) growth process.

**LABORATORY GROWN DIAMOND REPORT**

November 19, 2025

**IGI Report Number** LG737509179

**Description** LABORATORY GROWN DIAMOND

**Shape and Cutting Style** HEART MODIFIED BRILLIANT

**Measurements** 5.06 X 6.23 X 3.39 MM

**GRADING RESULTS**

**Carat Weight** 0.79 CARAT

**Color Grade** FANCY INTENSE YELLOW

**Clarity Grade** VVS 2

**ADDITIONAL GRADING INFORMATION**

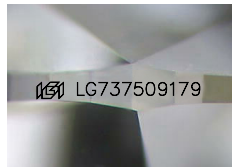
**Polish** GOOD

**Symmetry** VERY GOOD

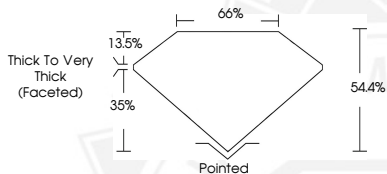
**Fluorescence** NONE

**Inscription(s)** IGI LG737509179

**Comments:** As Grown - No indication of post-growth treatment. This Laboratory Grown Diamond was created by High Pressure High Temperature (HPHT) growth process.



Sample Image Used



November 19, 2025

**IGI Report Number** LG737509179  
**HEART MODIFIED BRILLIANT**  
**LABORATORY GROWN DIAMOND**  
**5.06 X 6.23 X 3.39 MM**

**Carat Weight** 0.79 CARAT  
**Color Grade** FANCY INTENSE  
**YELLOW**

**Clarity Grade** VVS 2  
**Polish** GOOD  
**Symmetry** VERY GOOD  
**Fluorescence** NONE  
**Inscription(s)** IGI LG737509179

**Comments:** As Grown - No indication of post-growth treatment. This Laboratory Grown Diamond was created by High Pressure High Temperature (HPHT) growth process.



THIS DOCUMENT WAS PRODUCED WITH THE FOLLOWING SECURITY MEASURES: SPECIAL DOCUMENT PAPER, INK SCREENS, WATERMARK, BACKGROUND DESIGNS, HOLOGRAM AND OTHER SECURITY FEATURES NOT LISTED AND DO EXCEED DOCUMENT SECURITY INDUSTRY GUIDELINES.