



**INTERNATIONAL
GEMOLOGICAL
INSTITUTE**

ELECTRONIC COPY

LABORATORY GROWN DIAMOND REPORT

November 19, 2025
 IGI Report Number **LG737509176**
 Description **LABORATORY GROWN DIAMOND**
 Shape and Cutting Style **HEART MODIFIED BRILLIANT**
 Measurements **5.49 X 6.00 X 3.53 MM**

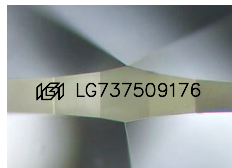
GRADING RESULTS

Carat Weight **0.86 CARAT**
 Color Grade **FANCY VIVID YELLOW**
 Clarity Grade **VVS 2**

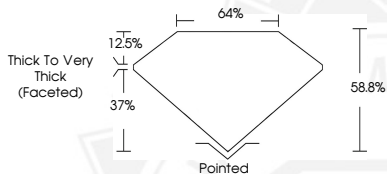
ADDITIONAL GRADING INFORMATION

Polish **VERY GOOD**
 Symmetry **FAIR**
 Fluorescence **NONE**
 Inscription(s) **IGI LG737509176**

Comments: As Grown - No indication of post-growth treatment. This Laboratory Grown Diamond was created by High Pressure High Temperature (HPHT) growth process.



Sample Image Used



November 19, 2025
 IGI Report Number **LG737509176**
 HEART MODIFIED BRILLIANT
 LABORATORY GROWN DIAMOND
 5.49 X 6.00 X 3.53 MM
 Carat Weight **0.86 CARAT**
 Color Grade **FANCY VIVID YELLOW**
 Clarity Grade **VVS 2**
 Polish **VERY GOOD**
 Symmetry **FAIR**
 Fluorescence **NONE**
 Inscription(s) **IGI LG737509176**

Comments: As Grown - No indication of post-growth treatment. This Laboratory Grown Diamond was created by High Pressure High Temperature (HPHT) growth process.



November 19, 2025
 IGI Report Number **LG737509176**
 HEART MODIFIED BRILLIANT
 LABORATORY GROWN DIAMOND
 5.49 X 6.00 X 3.53 MM
 Carat Weight **0.86 CARAT**
 Color Grade **FANCY VIVID YELLOW**
 Clarity Grade **VVS 2**
 Polish **VERY GOOD**
 Symmetry **FAIR**
 Fluorescence **NONE**
 Inscription(s) **IGI LG737509176**

Comments: As Grown - No indication of post-growth treatment. This Laboratory Grown Diamond was created by High Pressure High Temperature (HPHT) growth process.

THIS DOCUMENT WAS PRODUCED WITH THE FOLLOWING SECURITY MEASURES: SPECIAL DOCUMENT PAPER, INK SCREENS, WATERMARK, BACKGROUND DESIGNS, HOLOGRAM AND OTHER SECURITY FEATURES NOT LISTED AND DO EXCEED DOCUMENT SECURITY INDUSTRY GUIDELINES.

For terms & conditions and to verify this report, please visit www.igi.org