



**INTERNATIONAL  
GEMOLOGICAL  
INSTITUTE**

**LABORATORY GROWN DIAMOND REPORT**

November 19, 2025  
 IGI Report Number **LG737509171**  
 Description **LABORATORY GROWN DIAMOND**  
 Shape and Cutting Style **EMERALD CUT**  
 Measurements **5.33 X 3.71 X 2.53 MM**

**GRADING RESULTS**

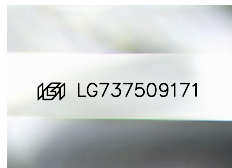
Carat Weight **0.50 CARAT**  
 Color Grade **FANCY INTENSE YELLOW**  
 Clarity Grade **VVS 2**

**ADDITIONAL GRADING INFORMATION**

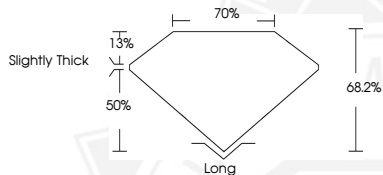
Polish **VERY GOOD**  
 Symmetry **VERY GOOD**  
 Fluorescence **NONE**  
 Inscription(s) **IGI LG737509171**

Comments: As Grown - No indication of post-growth treatment. This Laboratory Grown Diamond was created by High Pressure High Temperature (HPHT) growth process.

**ELECTRONIC COPY**



Sample Image Used



November 19, 2025  
 IGI Report Number **LG737509171**  
**EMERALD CUT**  
**LABORATORY GROWN DIAMOND**  
**5.33 X 3.71 X 2.53 MM**  
 Carat Weight **0.50 CARAT**  
 Color Grade **FANCY INTENSE YELLOW**  
 Clarity Grade **VVS 2**  
 Polish **VERY GOOD**  
 Symmetry **VERY GOOD**  
 Fluorescence **NONE**  
 Inscription(s) **IGI LG737509171**

Comments: As Grown - No indication of post-growth treatment. This Laboratory Grown Diamond was created by High Pressure High Temperature (HPHT) growth process.



November 19, 2025  
 IGI Report Number **LG737509171**  
**EMERALD CUT**  
**LABORATORY GROWN DIAMOND**  
**5.33 X 3.71 X 2.53 MM**  
 Carat Weight **0.50 CARAT**  
 Color Grade **FANCY INTENSE YELLOW**  
 Clarity Grade **VVS 2**  
 Polish **VERY GOOD**  
 Symmetry **VERY GOOD**  
 Fluorescence **NONE**  
 Inscription(s) **IGI LG737509171**

Comments: As Grown - No indication of post-growth treatment. This Laboratory Grown Diamond was created by High Pressure High Temperature (HPHT) growth process.



THIS DOCUMENT WAS PRODUCED WITH THE FOLLOWING SECURITY MEASURES: SPECIAL DOCUMENT PAPER, INK SCREENS, WATERMARK, BACKGROUND DESIGNS, HOLOGRAM AND OTHER SECURITY FEATURES NOT LISTED AND DO EXCEED DOCUMENT SECURITY INDUSTRY GUIDELINES.

For terms & conditions and to verify this report, please visit [www.igi.org](http://www.igi.org)