



ELECTRONIC COPY

LG737506185
Report verification at igi.org



October 27, 2025
IGI Report Number **LG737506185**
Description **LABORATORY GROWN DIAMOND**
Shape and Cutting Style **SQUARE CUSHION MODIFIED BRILLIANT**
Measurements **7.68 X 7.59 X 5.04 MM**
GRADING RESULTS
Carat Weight **2.51 CARATS**
Color Grade **D**
Clarity Grade **VVS 2**

October 27, 2025
IGI Report Number **LG737506185**
Description **LABORATORY GROWN DIAMOND**
Shape and Cutting Style **SQUARE CUSHION MODIFIED BRILLIANT**
Measurements **7.68 X 7.59 X 5.04 MM**

GRADING RESULTS

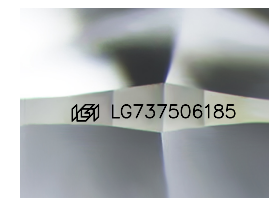
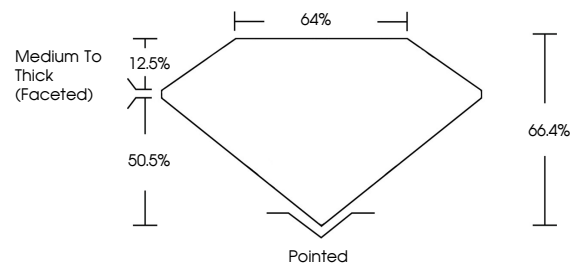
Carat Weight **2.51 CARATS**
Color Grade **D**
Clarity Grade **VVS 2**

ADDITIONAL GRADING INFORMATION

Polish **EXCELLENT**
Symmetry **EXCELLENT**
Fluorescence **NONE**
Inscription(s) **IGI LG737506185**

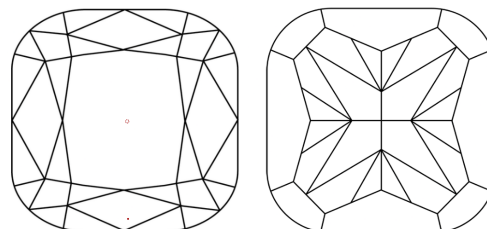
Comments: As Grown - No indication of post-growth treatment.
This Laboratory Grown Diamond was created by High Pressure High Temperature (HPHT) growth process.
Type II

PROPORTIONS



Sample Image Used

CLARITY CHARACTERISTICS



KEY TO SYMBOLS

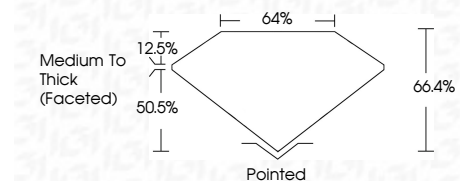
Red symbols indicate internal characteristics.
Green symbols indicate external characteristics.

COLOR

D E F G H I J Faint Very Light Light

CLARITY

FL	IF	VVS ¹⁻²	VS ¹⁻²	SI ¹⁻²	I ¹⁻³
Flawless	Internally Flawless	Very Very Slightly Included	Very Slightly Included	Slightly Included	Included



ADDITIONAL GRADING INFORMATION

Polish **EXCELLENT**
Symmetry **EXCELLENT**
Fluorescence **NONE**
Inscription(s) **IGI LG737506185**
Comments: As Grown - No indication of post-growth treatment.
This Laboratory Grown Diamond was created by High Pressure High Temperature (HPHT) growth process.
Type II



October 27, 2025
IGI Report No LG737506185
SQUARE CUSHION MODIFIED BRILLIANT
7.68 X 7.59 X 5.04 MM
Carat Weight **2.51 CARATS**
Color Grade **D**
Clarity Grade **VVS 2**
Table **66.4%**
Girdle **66.4%**
Culet **Medium To Thick (Faceted)**
Polish **Excellent**
Symmetry **Excellent**
Fluorescence **NONE**
Inscription(s) **IGI LG737506185**
Comments: As Grown - No indication of post-growth treatment.
This Laboratory Grown Diamond was created by High Pressure High Temperature (HPHT) growth process.
Type II