



INTERNATIONAL GEMOLOGICAL INSTITUTE

ELECTRONIC COPY

LABORATORY GROWN DIAMOND REPORT

October 12, 2025

IGI Report Number

LG736503461

Description

LABORATORY GROWN DIAMOND

Shape and Cutting Style

ROUND BRILLIANT

Measurements

3.11 - 3.14 X 2.00 MM

GRADING RESULTS

Carat Weight

0.12 CARAT

Color Grade

FANCY LIGHT PINK

Clarity Grade

VS 1

Cut Grade

GOOD

ADDITIONAL GRADING INFORMATION

Polish

VERY GOOD

Symmetry

FAIR

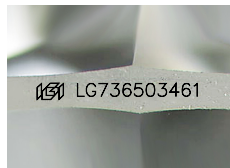
Fluorescence

SLIGHT

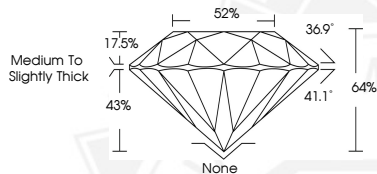
Inscription(s)

IGI LG736503461

Comments: This Laboratory Grown Diamond was created by High Pressure High Temperature (HPHT) growth process. Indications of post-growth treatment.



Sample Image Used



October 12, 2025

IGI Report Number LG736503461

ROUND BRILLIANT

LABORATORY GROWN DIAMOND

3.11 - 3.14 X 2.00 MM

Carat Weight 0.12 CARAT

Color Grade FANCY LIGHT PINK

Clarity Grade VS 1

Cut Grade GOOD

Polish VERY GOOD

Symmetry FAIR

Fluorescence SLIGHT

Inscription(s) IGI LG736503461

Comments: This Laboratory Grown Diamond was created by High Pressure High Temperature (HPHT) growth process. Indications of post-growth treatment.



October 12, 2025

IGI Report Number LG736503461

ROUND BRILLIANT

LABORATORY GROWN DIAMOND

3.11 - 3.14 X 2.00 MM

Carat Weight 0.12 CARAT

Color Grade FANCY LIGHT PINK

Clarity Grade VS 1

Cut Grade GOOD

Polish VERY GOOD

Symmetry FAIR

Fluorescence SLIGHT

Inscription(s) IGI LG736503461

Comments: This Laboratory Grown Diamond was created by High Pressure High Temperature (HPHT) growth process. Indications of post-growth treatment.



THIS DOCUMENT WAS PRODUCED WITH THE FOLLOWING SECURITY MEASURES: SPECIAL DOCUMENT PAPER, INK SCREENS, WATERMARK, BACKGROUND DESIGNS, HOLOGRAM AND OTHER SECURITY FEATURES NOT LISTED AND DO EXCEED DOCUMENT SECURITY INDUSTRY GUIDELINES.

For terms & conditions and to verify this report, please visit www.igi.org