



INTERNATIONAL GEMOLOGICAL INSTITUTE

ELECTRONIC COPY

LABORATORY GROWN DIAMOND REPORT

September 25, 2025

IGI Report Number

LG736503404

Description

LABORATORY GROWN DIAMOND

Shape and Cutting Style

ROUND BRILLIANT

Measurements

5.42 - 5.47 X 3.28 MM

GRADING RESULTS

Carat Weight

0.59 CARAT

Color Grade

D

Clarity Grade

VS 1

Cut Grade

IDEAL

ADDITIONAL GRADING INFORMATION

Polish

EXCELLENT

Symmetry

EXCELLENT

Fluorescence

NONE

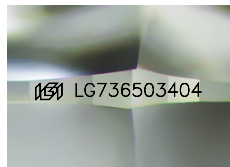
Inscription(s)

LG736503404

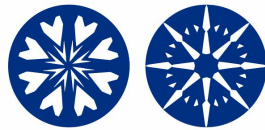
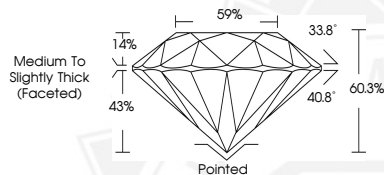
Comments: HEARTS & ARROWS

This Laboratory Grown Diamond was created by Chemical Vapor Deposition (CVD) growth process.

Type IIa



Sample Image Used



HEARTS & ARROWS



September 25, 2025

IGI Report Number LG736503404

ROUND BRILLIANT

LABORATORY GROWN DIAMOND

5.42 - 5.47 X 3.28 MM

Carat Weight 0.59 CARAT

Color Grade D

Clarity Grade VS 1

Cut Grade IDEAL

Polish EXCELLENT

Symmetry EXCELLENT

Fluorescence NONE

Inscription(s) LG736503404

Comments: HEARTS & ARROWS This Laboratory Grown Diamond was created by Chemical Vapor Deposition (CVD) growth process. Type IIa



September 25, 2025

IGI Report Number LG736503404

ROUND BRILLIANT

LABORATORY GROWN DIAMOND

5.42 - 5.47 X 3.28 MM

Carat Weight 0.59 CARAT

Color Grade D

Clarity Grade VS 1

Cut Grade IDEAL

Polish EXCELLENT

Symmetry EXCELLENT

Fluorescence NONE

Inscription(s) LG736503404

Comments: HEARTS & ARROWS This Laboratory Grown Diamond was created by Chemical Vapor Deposition (CVD) growth process. Type IIa



THIS DOCUMENT WAS PRODUCED WITH THE FOLLOWING SECURITY MEASURES: SPECIAL DOCUMENT PAPER, INK SCREENS, WATERMARK, BACKGROUND DESIGNS, HOLOGRAM AND OTHER SECURITY FEATURES NOT LISTED AND DO EXCEED DOCUMENT SECURITY INDUSTRY GUIDELINES.

For terms & conditions and to verify this report, please visit www.igi.org