



**ELECTRONIC COPY**

LG736503247  
Report verification at igi.org



September 23, 2025

IGI Report Number **LG736503247**

Description **LABORATORY GROWN DIAMOND**

Shape and Cutting Style **OCTAGONAL STEP CUT**

Measurements **9.84 X 7.60 X 4.72 MM**

**GRADING RESULTS**

Carat Weight **2.90 CARATS**

Color Grade **E**

Clarity Grade **VVS 2**

September 23, 2025

IGI Report Number **LG736503247**

Description **LABORATORY GROWN DIAMOND**

Shape and Cutting Style **OCTAGONAL STEP CUT**

Measurements **9.84 X 7.60 X 4.72 MM**

**GRADING RESULTS**

Carat Weight **2.90 CARATS**

Color Grade **E**

Clarity Grade **VVS 2**

**ADDITIONAL GRADING INFORMATION**

Polish **EXCELLENT**

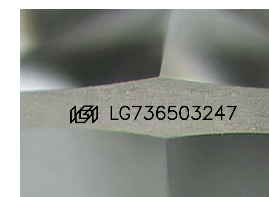
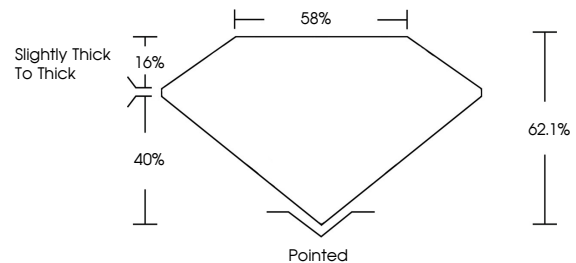
Symmetry **EXCELLENT**

Fluorescence **NONE**

Inscription(s) **IGI LG736503247**

Comments: This Laboratory Grown Diamond was created by Chemical Vapor Deposition (CVD) growth process.  
Type IIa

**PROPORTIONS**



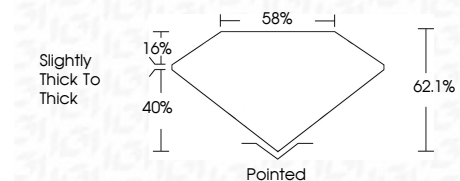
Sample Image Used

**COLOR**

D E F G H I J Faint Very Light Light

**CLARITY**

| IF                  | VS <sup>1-2</sup>           | VS <sup>1-2</sup>      | SI <sup>1-2</sup> | I <sup>1-3</sup> |
|---------------------|-----------------------------|------------------------|-------------------|------------------|
| Internally Flawless | Very Very Slightly Included | Very Slightly Included | Slightly Included | Included         |



**ADDITIONAL GRADING INFORMATION**

Polish **EXCELLENT**

Symmetry **EXCELLENT**

Fluorescence **NONE**

Inscription(s) **IGI LG736503247**

Comments: This Laboratory Grown Diamond was created by Chemical Vapor Deposition (CVD) growth process.  
Type IIa



**IGI**



September 23, 2025  
IGI Report No LG736503247  
OCTAGONAL STEP CUT  
9.84 X 7.60 X 4.72 MM  
2.90 CARATS  
E  
Carat Weight  
Color Grade  
VVS 2  
Clarity Grade  
62.1%  
Depth  
40%  
Table  
Slightly Thick To Thick  
Grades  
Pointed  
Culet  
EXCELLENT  
Polish  
EXCELLENT  
Symmetry  
NONE  
Fluorescence  
IGI LG736503247  
Inscription(s)

Comments: This Laboratory Grown Diamond was created by Chemical Vapor Deposition (CVD) growth process.  
Type IIa