



ELECTRONIC COPY

LG736501080
Report verification at igi.org



September 25, 2025
IGI Report Number **LG736501080**
Description **LABORATORY GROWN DIAMOND**
Shape and Cutting Style **MODIFIED SQUARE EMERALD CUT**

Measurements **12.35 X 11.79 X 6.89 MM**

GRADING RESULTS
Carat Weight **10.03 CARATS**
Color Grade **FANCY INTENSE PINK**
Clarity Grade **VS 2**

September 25, 2025
IGI Report Number **LG736501080**
Description **LABORATORY GROWN DIAMOND**
Shape and Cutting Style **MODIFIED SQUARE EMERALD CUT**
Measurements **12.35 X 11.79 X 6.89 MM**

GRADING RESULTS

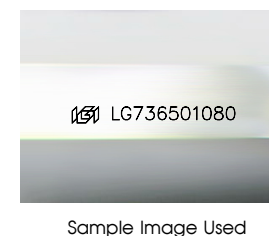
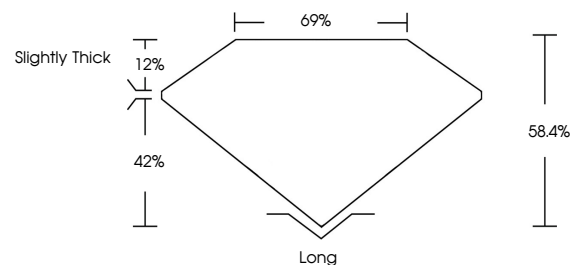
Carat Weight **10.03 CARATS**
Color Grade **FANCY INTENSE PINK**
Clarity Grade **VS 2**

ADDITIONAL GRADING INFORMATION

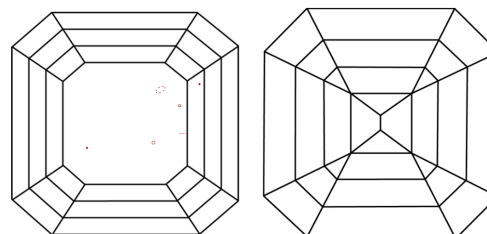
Polish **EXCELLENT**
Symmetry **EXCELLENT**
Fluorescence **STRONG**
Inscription(s) **IGI LG736501080**

Comments: This Laboratory Grown Diamond was created by Chemical Vapor Deposition (CVD) growth process. Indications of post-growth treatment.

PROPORTIONS



CLARITY CHARACTERISTICS



KEY TO SYMBOLS

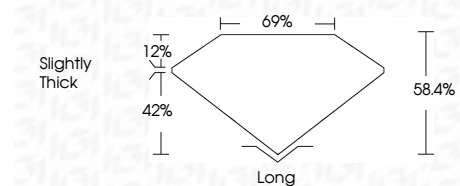
Red symbols indicate internal characteristics.
Green symbols indicate external characteristics.

COLOR

D E F G H I J Faint Very Light Light

CLARITY

| IF | WS ¹⁻² | VS ¹⁻² | SI ¹⁻² | I ¹⁻³ |
|---------------------|-----------------------------|------------------------|-------------------|------------------|
| Internally Flawless | Very Very Slightly Included | Very Slightly Included | Slightly Included | Included |



ADDITIONAL GRADING INFORMATION

Polish **EXCELLENT**
Symmetry **EXCELLENT**
Fluorescence **STRONG**
Inscription(s) **IGI LG736501080**
Comments: This Laboratory Grown Diamond was created by Chemical Vapor Deposition (CVD) growth process. Indications of post-growth treatment.



September 25, 2025
IGI Report No LG736501080
MODIFIED SQUARE EMERALD CUT
10.03 CARATS
FANCY INTENSE PINK
VS 2
69%
58.4%
Slightly Thick
Long
EXCELLENT
EXCELLENT
STRONG
IGI LG736501080

Comments: This Laboratory Grown Diamond was created by Chemical Vapor Deposition (CVD) growth process. Indications of post-growth treatment.