



ELECTRONIC COPY

LG736501059
Report verification at igi.org



September 30, 2025

IGI Report Number **LG736501059**

Description **LABORATORY GROWN DIAMOND**

Shape and Cutting Style **EMERALD CUT**

Measurements **10.07 X 6.66 X 4.42 MM**

GRADING RESULTS

Carat Weight **3.04 CARATS**

Color Grade **FANCY VIVID BLUE**

Clarity Grade **VS 1**

September 30, 2025
IGI Report Number **LG736501059**
Description **LABORATORY GROWN DIAMOND**
Shape and Cutting Style **EMERALD CUT**
Measurements **10.07 X 6.66 X 4.42 MM**

GRADING RESULTS

Carat Weight **3.04 CARATS**

Color Grade **FANCY VIVID BLUE**

Clarity Grade **VS 1**

ADDITIONAL GRADING INFORMATION

Polish **EXCELLENT**

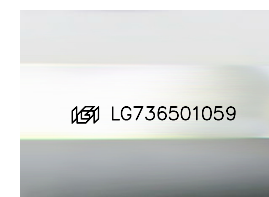
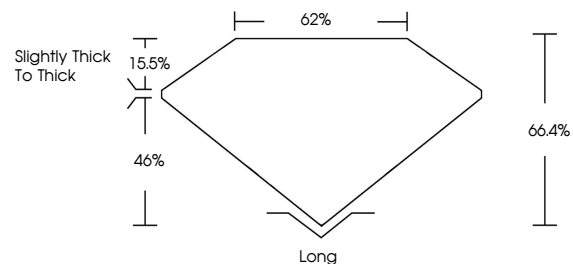
Symmetry **EXCELLENT**

Fluorescence **NONE**

Inscription(s) **LG736501059**

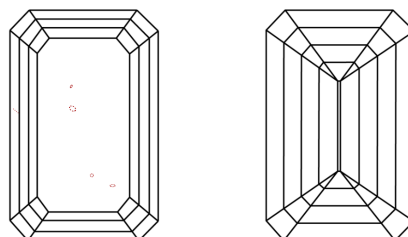
Comments: This Laboratory Grown Diamond was created by Chemical Vapor Deposition (CVD) growth process.
Indications of post-growth treatment.

PROPORTIONS



Sample Image Used

CLARITY CHARACTERISTICS



KEY TO SYMBOLS

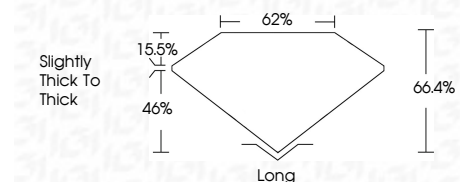
Red symbols indicate internal characteristics.
Green symbols indicate external characteristics.

COLOR

D E F G H I J Faint Very Light Light

CLARITY

IF	VS ¹⁻²	VS ¹⁻²	SI ¹⁻²	I ¹⁻³
Internally Flawless	Very Very Slightly Included	Very Slightly Included	Slightly Included	Included



ADDITIONAL GRADING INFORMATION

Polish **EXCELLENT**

Symmetry **EXCELLENT**

Fluorescence **NONE**

Inscription(s) **LG736501059**

Comments: This Laboratory Grown Diamond was created by Chemical Vapor Deposition (CVD) growth process.
Indications of post-growth treatment.



IGI



September 30, 2025
IGI Report No LG736501059
EMERALD CUT

3.04 CARATS
Carat Weight
FANCY VIVID BLUE
Color Grade

VS 1
Clarity Grade

66.4%
Table

62%
Girdle

Slightly Thick To Thick

Long
Culet
EXCELLENT
Polish

EXCELLENT
Symmetry

NONE
Fluorescence

IGI LG736501059
Inscription(s)

Comments: This Laboratory Grown Diamond was created by Chemical Vapor Deposition (CVD) growth process.
Indications of post-growth treatment.