



ELECTRONIC COPY

LABORATORY GROWN DIAMOND REPORT

| | |
|-------------------------|----------------------------|
| September 22, 2025 | |
| IGI Report Number | LG735599050 |
| Description | LABORATORY GROWN DIAMOND |
| Shape and Cutting Style | CUSHION MODIFIED BRILLIANT |
| Measurements | 9.58 X 6.98 X 4.77 MM |

GRADING RESULTS

| | |
|---------------|-------------|
| Carat Weight | 2.59 CARATS |
| Color Grade | D |
| Clarity Grade | VVS 1 |

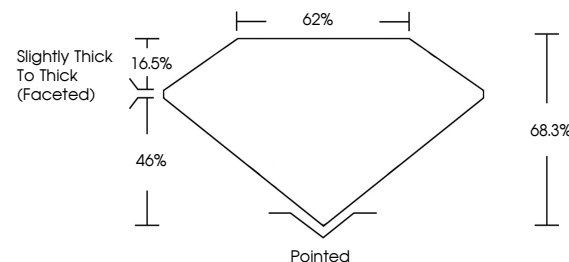
ADDITIONAL GRADING INFORMATION

| | |
|----------------|----------------|
| Polish | EXCELLENT |
| Symmetry | EXCELLENT |
| Fluorescence | NONE |
| Inscription(s) | 15 LG735599050 |

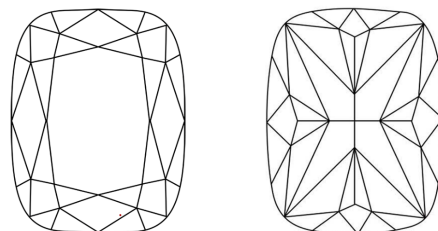
Comments: This Laboratory Grown Diamond was created by Chemical Vapor Deposition (CVD) growth process.
Type IIa

LG735599050
Report verification at lgi.org

PROPORTIONS

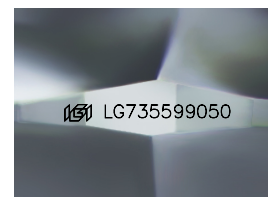


CLARITY CHARACTERISTICS



KEY TO SYMBOLS

Red symbols indicate internal characteristics.
Green symbols indicate external characteristics.



Sample Image Used

COLOR

D E F G H I J Faint Very Light Light

CLARITY

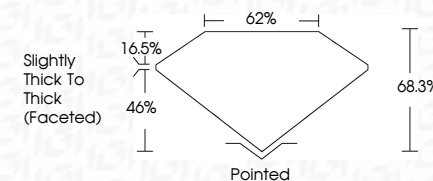
IF VWS¹⁻² VS¹⁻² SI¹⁻² I¹⁻³

| Internally Flawless | Very Very Slightly Included | Very Slightly Included | Slightly Included | Included |
|------------------------|--------------------------------|---------------------------|----------------------|----------|
|------------------------|--------------------------------|---------------------------|----------------------|----------|

LABORATORY GROWN DIAMOND REPORT



| | |
|-------------------------|-------------------------------|
| September 22, 2025 | |
| IGI Report Number | LG735599050 |
| Description | LABORATORY GROWN DIAMOND |
| Shape and Cutting Style | CUSHION MODIFIED BRILLIANT |
| Measurements | 9.58 X 6.98 X 4.77 MM |
| GRADING RESULTS | |
| Carat Weight | 2.59 CARATS |
| Color Grade | D |
| Clarity Grade | VVS 1 |



ADDITIONAL GRADING INFORMATION

| | |
|---|---|
| Polish | EXCELLENT |
| Symmetry | EXCELLENT |
| Fluorescence | NONE |
| Inscription(s) |  LG735599050 |
| <p>Comments: This Laboratory Grown Diamond was created by Chemical Vapor Deposition (CVD) growth process.</p> <p>Type IIa</p> | |



© IGI 2020, International Gemological Institute

FD - 10 20



THIS DOCUMENT WAS PRODUCED WITH THE FOLLOWING SECURITY MEASURES: SPECIAL DOCUMENT PAPER, INK SCREENS, WATERMARK, BACKGROUND DESIGNS, HOLOGRAM AND OTHER SECURITY FEATURES NOT LISTED AND DO EXCEED DOCUMENT SECURITY INDUSTRY GUIDELINES

September 22, 2025
 CGI Report No LG735599050
 DIVISION MODIFIED RRI | LANT

| | | | |
|------------------------------|-------------|--------------------|----------------------------------|
| 2.59 X 6.98 X 4.77 MM | | 2.59 CARATS | |
| Carat Weight | Color Grade | Clarity Grade | VS 1 |
| Depth | | | 68.9% |
| Table | | | 66% |
| Girdle | | | Slightly Thick to Thick (graded) |
| Quiet | | | Pointed |
| Polish | | | EXCELLENT |
| Symmetry | | | EXCELLENT |
| Fluorescence | | | NONE |
| 100% Natural | | 100% Natural | |

Comments:
This Laboratory Grown Diamond was created by Chemical Vapor Deposition (CVD) growth process.

www.igi.org