



ELECTRONIC COPY

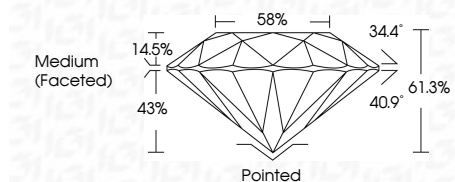
LG735598586
Report verification at igi.org



September 22, 2025
IGI Report Number **LG735598586**
Description **LABORATORY GROWN DIAMOND**
Shape and Cutting Style **ROUND BRILLIANT**
Measurements **8.10 - 8.15 X 4.98 MM**

GRADING RESULTS

Carat Weight **2.01 CARATS**
Color Grade **E**
Clarity Grade **VVS 2**
Cut Grade **IDEAL**



ADDITIONAL GRADING INFORMATION

Polish **EXCELLENT**
Symmetry **EXCELLENT**
Fluorescence **NONE**
Inscription(s) **IGI LG735598586**
Comments: HEARTS & ARROWS
This Laboratory Grown Diamond was created by Chemical Vapor Deposition (CVD) growth process. Type IIa



September 22, 2025	IGI Report No LG735598586	2.01 CARATS	E	Pointed
ROUND BRILLIANT	8.10 - 8.15 X 4.98 MM	VVS 2	IDEAL	EXCELLENT
Carat Weight	Color Grade	Clarity Grade	Depth	Table
2.01	E	VVS 2	61.3%	58%
Color Grade	Clarity Grade	Cut Grade	Table	Grille
E	VVS 2	IDEAL	58%	Medium (Faceted)
Clarity Grade	Cut Grade	Table	Grille	Culet
VVS 2	IDEAL	58%	Medium (Faceted)	Pointed
Depth	Table	Grille	Culet	Polish
61.3%	58%	Medium (Faceted)	Pointed	EXCELLENT
Table	Grille	Culet	Polish	EXCELLENT
58%	Medium (Faceted)	Pointed	EXCELLENT	EXCELLENT
Medium (Faceted)	Pointed	EXCELLENT	EXCELLENT	NONE
None	None	None	None	None
Inscriptions(s)	IGI LG735598586			

Comments: HEARTS & ARROWS
This Laboratory Grown Diamond was created by Chemical Vapor Deposition (CVD) growth process. Type IIa

September 22, 2025
IGI Report Number **LG735598586**
Description **LABORATORY GROWN DIAMOND**
Shape and Cutting Style **ROUND BRILLIANT**
Measurements **8.10 - 8.15 X 4.98 MM**

GRADING RESULTS

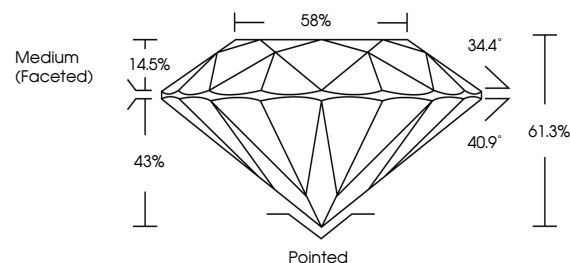
Carat Weight **2.01 CARATS**
Color Grade **E**
Clarity Grade **VVS 2**
Cut Grade **IDEAL**

ADDITIONAL GRADING INFORMATION

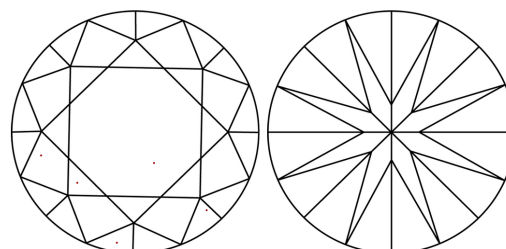
Polish **EXCELLENT**
Symmetry **EXCELLENT**
Fluorescence **NONE**
Inscription(s) **IGI LG735598586**

Comments: HEARTS & ARROWS
This Laboratory Grown Diamond was created by Chemical Vapor Deposition (CVD) growth process. Type IIa

PROPORTIONS

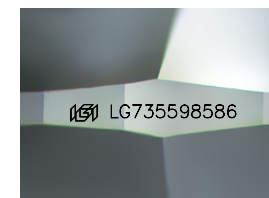
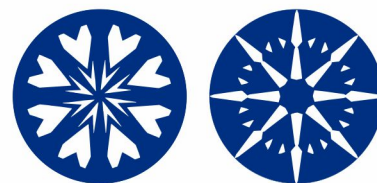


CLARITY CHARACTERISTICS



KEY TO SYMBOLS

Red symbols indicate internal characteristics.
Green symbols indicate external characteristics.



Sample Image Used

COLOR

D E F G H I J Faint Very Light Light

CLARITY

IF VS¹⁻² VS¹⁻² SI¹⁻² I¹⁻³

Internally Flawless Very Very Slightly Included Very Slightly Included Slightly Included Included

