

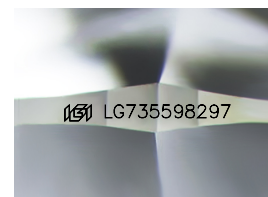
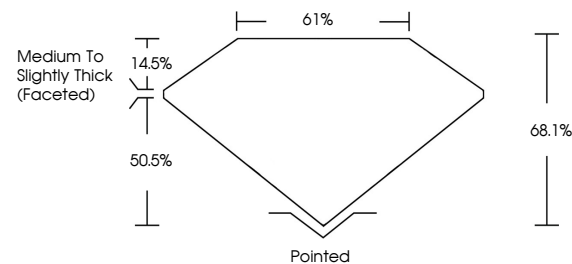


ELECTRONIC COPY

LABORATORY GROWN DIAMOND REPORT

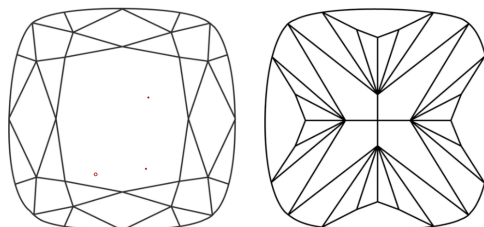
LG735598297
Report verification at igi.org

PROPORTIONS



Sample Image Used

CLARITY CHARACTERISTICS



KEY TO SYMBOLS

Red symbols indicate internal characteristics.
Green symbols indicate external characteristics.

COLOR

D E F G H I J Faint Very Light Light

CLARITY

IF	VS ¹⁻²	VS ¹⁻²	SI ¹⁻²	I ¹⁻³
Internally Flawless	Very Very Slightly Included	Very Slightly Included	Slightly Included	Included

LABORATORY GROWN DIAMOND REPORT



September 22, 2025

IGI Report Number **LG735598297**

Description	LABORATORY GROWN DIAMOND
-------------	--------------------------

Shape and Cutting Style **SQUARE CUSHION MODIFIED
BRILLIANT**

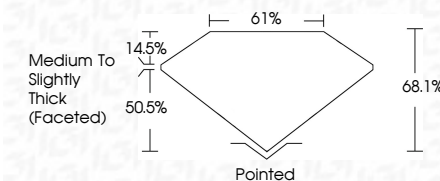
Measurements **8.35 X 8.27 X 5.63 MM**

GRADING RESULTS

Carat Weight 3.04 CARATS

Color Grade **E**

Clarity Grade VS 1



ADDITIONAL GRADING INFORMATION

Polish **EXCELLENT**Symmetry **EXCELLENT**Fluorescence **NONE**Inscription(s) LG735598297

Comments: This Laboratory Grown Diamond was created by Chemical Vapor Deposition (CVD) growth process.
Type IIa



© IGI 2020, International Gemological Institute

FD - 10 20



THIS DOCUMENT WAS PRODUCED WITH THE FOLLOWING SECURITY MEASURES: SPECIAL DOCUMENT PAPER, INK SCREENS, WATERMARK, BACKGROUND DESIGNS, HOLOGRAM AND OTHER SECURITY FEATURES NOT LISTED AND DO EXCEED DOCUMENT SECURITY INDUSTRY GUIDELINES

www.igi.org

September 22, 2025	GI Report No. LG7559297	3.04 CARATS	VS 1	68.1%	61%	Medium to Slightly Thick (Faceted)	Polished	Excellent	Excellent	None	1691 LG7559297	Comments: The Laboratory Grown Diamond was analyzed by the Laboratory for Vapor Deposition (LVD) growth process. Type IIG
	SQUARE CUSHION MODIFIED BRILLIANT	Carat Weight Color Grade Clarity Grade Depth Gable Table Culet Polish Symmetry Fluorescence Inscriptions(s)	E									