



ELECTRONIC COPY

LG735594054
Report verification at igi.org



September 24, 2025
IGI Report Number **LG735594054**
Description **LABORATORY GROWN DIAMOND**
Shape and Cutting Style **MODIFIED MARQUISE STEP CUT**
Measurements **10.45 X 5.20 X 3.12 MM**
GRADING RESULTS
Carat Weight **1.18 CARAT**
Color Grade **D**
Clarity Grade **VS 1**

LABORATORY GROWN DIAMOND REPORT

September 24, 2025
IGI Report Number **LG735594054**
Description **LABORATORY GROWN DIAMOND**
Shape and Cutting Style **MODIFIED MARQUISE STEP CUT**
Measurements **10.45 X 5.20 X 3.12 MM**

GRADING RESULTS

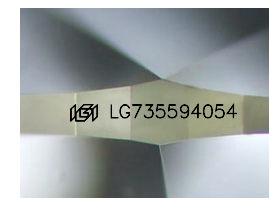
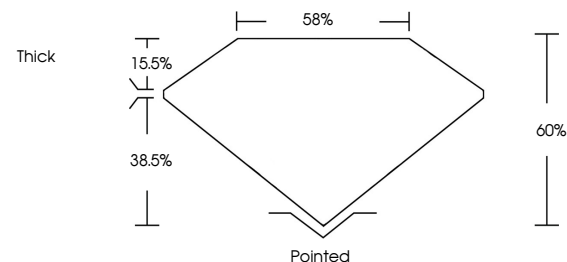
Carat Weight **1.18 CARAT**
Color Grade **D**
Clarity Grade **VS 1**

ADDITIONAL GRADING INFORMATION

Polish **EXCELLENT**
Symmetry **EXCELLENT**
Fluorescence **NONE**
Inscription(s) **IGI LG735594054**

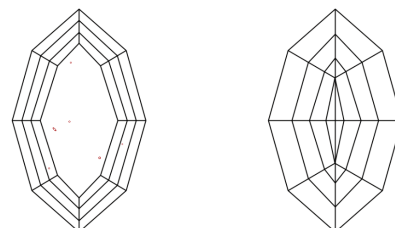
Comments: This Laboratory Grown Diamond was created by Chemical Vapor Deposition (CVD) growth process. Type IIa

PROPORTIONS



Sample Image Used

CLARITY CHARACTERISTICS



KEY TO SYMBOLS

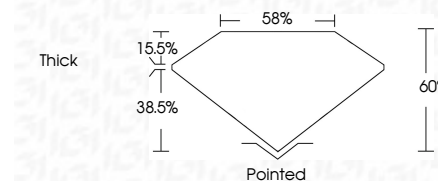
Red symbols indicate internal characteristics.
Green symbols indicate external characteristics.

COLOR

D E F G H I J Faint Very Light Light

CLARITY

IF	VS ¹⁻²	VS ¹⁻²	SI ¹⁻²	I ¹⁻³
Internally Flawless	Very Very Slightly Included	Very Slightly Included	Slightly Included	Included



ADDITIONAL GRADING INFORMATION

Polish **EXCELLENT**
Symmetry **EXCELLENT**
Fluorescence **NONE**
Inscription(s) **IGI LG735594054**
Comments: This Laboratory Grown Diamond was created by Chemical Vapor Deposition (CVD) growth process. Type IIa



September 24, 2025
IGI Report No LG735594054
MODIFIED MARQUISE STEP CUT
10.45 X 5.20 X 3.12 MM
1.18 CARAT
D
VS 1
60%
38%
Thick
Pointed
EXCELLENT
EXCELLENT
NONE
IGI LG735594054
Comments: This Laboratory Grown Diamond was created by Chemical Vapor Deposition (CVD) growth process. Type IIa