



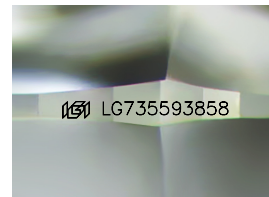
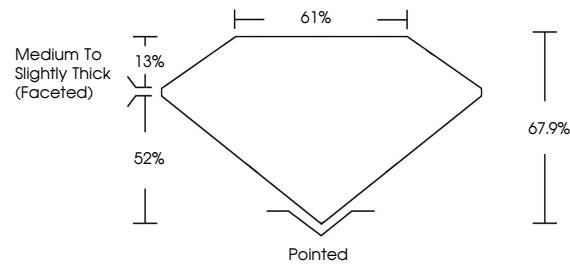
**INTERNATIONAL  
GEMOLOGICAL  
INSTITUTE**

**ELECTRONIC COPY**

## LABORATORY GROWN DIAMOND REPORT

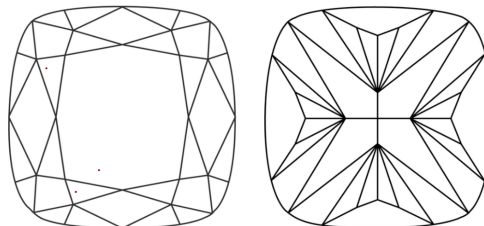
LG735593858  
Report verification at [igi.org](https://www.igi.org)

## PROPORTIONS



Sample Image Used

## CLARITY CHARACTERISTICS



## KEY TO SYMBOLS

Red symbols indicate internal characteristics.  
Green symbols indicate external characteristics.

**COLOR**

D E F G H I J Faint Very Light Light

## CLARITY

IF                      WS<sup>1-2</sup>                      VS<sup>1-2</sup>                      SI<sup>1-2</sup>                      I<sup>1-3</sup>

Internally Flawless	Very Very Slightly Included	Very Slightly Included	Slightly Included	Included
------------------------	--------------------------------	---------------------------	----------------------	----------



© IGI 2020, International Gemological Institute

FD - 10 20

**www.igi.org**

THIS DOCUMENT WAS PRODUCED WITH THE FOLLOWING SECURITY MEASURES: SPECIAL DOCUMENT PAPER, INK SCREENS, WATERMARK, BACKGROUND DESIGNS, HOLOGRAM AND OTHER SECURITY FEATURES NOT LISTED AND DO EXCEED DOCUMENT SECURITY INDUSTRY GUIDELINES

## LABORATORY GROWN DIAMOND REPORT



September 22, 2025

IGI Report Number **LG735593858**

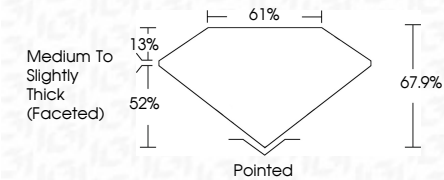
Description	LABORATORY GROWN DIAMOND
-------------	--------------------------

Shape and Cutting Style **SQUARE CUSHION MODIFIED  
BRILLIANT**

Measurements **8.42 X 8.31 X 5.64 MM**

## GRADING RESULTS

Carat Weight **3.03 CARATS**

Color Grade **E**Clarity Grade VVS 2

### ADDITIONAL GRADING INFORMATION

Polish **EXCELLENT**Symmetry **EXCELLENT**Fluorescence **NONE**Inscription(s)  LG73559385

Comments: This Laboratory Grown Diamond was created by Chemical Vapor Deposition (CVD) growth process.  
Type IIa



IGI

September 22, 2025	3.03 CARAT	Medium to slightly thick (noticeable)	Polished	EXCELLENT	NO	161 LG7559589	<p><b>Comments:</b>          The Laboratory Growth Diamond was created by Chemical Vapor Deposition (CVD) growth process.          Type IIa</p>
IGI Report No. LG7559589	Color Grade	Depth	Symmetry	EXCELLENT			
SQJ Report No. LG7559589	Carat Weight	Table	Fluorescence				
CLASH DIAMOND MODIFIED BRILLIANT	8.02 X 8.31 X 5.64 MM	Grade	Inscriptions(s)				