



ELECTRONIC COPY

LG735593037 Report verification at igi.org



September 21, 2025 IGI Report Number LG735593037 Description LABORATORY GROWN DIAMOND Shape and Cutting Style CUSHION MODIFIED BRILLIANT Measurements 8.07 X 5.51 X 3.87 MM GRADING RESULTS Carat Weight 1.53 CARAT Color Grade E Clarity Grade VS 1

LABORATORY GROWN DIAMOND REPORT

September 21, 2025 IGI Report Number LG735593037 Description LABORATORY GROWN DIAMOND Shape and Cutting Style CUSHION MODIFIED BRILLIANT Measurements 8.07 X 5.51 X 3.87 MM

GRADING RESULTS

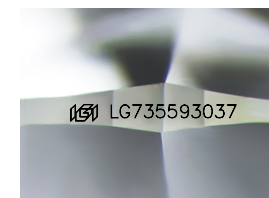
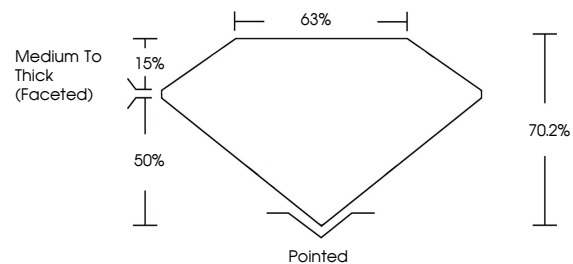
Carat Weight 1.53 CARAT Color Grade E Clarity Grade VS 1

ADDITIONAL GRADING INFORMATION

Polish EXCELLENT Symmetry EXCELLENT Fluorescence NONE Inscription(s) IGI LG735593037

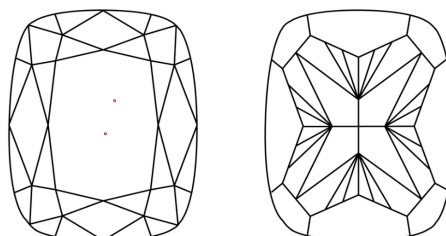
Comments: This Laboratory Grown Diamond was created by Chemical Vapor Deposition (CVD) growth process. Type IIa

PROPORTIONS



Sample Image Used

CLARITY CHARACTERISTICS



KEY TO SYMBOLS

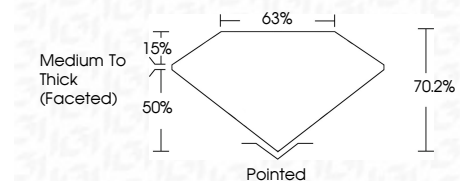
Red symbols indicate internal characteristics. Green symbols indicate external characteristics.

COLOR

D E F G H I J Faint Very Light Light

CLARITY

IF WS 1-2 VS 1-2 SI 1-2 I 1-3 Internally Flawless Very Very Slightly Included Very Slightly Included Slightly Included Included



ADDITIONAL GRADING INFORMATION

Polish EXCELLENT Symmetry EXCELLENT Fluorescence NONE Inscription(s) IGI LG735593037 Comments: This Laboratory Grown Diamond was created by Chemical Vapor Deposition (CVD) growth process. Type IIa



September 21, 2025 IGI Report No LG735593037 CUSHION MODIFIED BRILLIANT 8.07 X 5.51 X 3.87 MM 1.53 CARAT E VS 1 70.2% 63% Medium To Thick (Faceted) Pointed EXCELLENT EXCELLENT NONE NONE IGI LG735593037 Comments: This Laboratory Grown Diamond was created by Chemical Vapor Deposition (CVD) growth process. Type IIa