



ELECTRONIC COPY

LG735592208
Report verification at igi.org



September 20, 2025

IGI Report Number LG735592208

Description LABORATORY GROWN DIAMOND

Shape and Cutting Style ROUND BRILLIANT

Measurements 11.17 - 11.23 X 6.76 MM

GRADING RESULTS

Carat Weight 5.25 CARATS

Color Grade E

Clarity Grade VVS 2

Cut Grade IDEAL

September 20, 2025
IGI Report Number LG735592208
Description LABORATORY GROWN DIAMOND
Shape and Cutting Style ROUND BRILLIANT
Measurements 11.17 - 11.23 X 6.76 MM

GRADING RESULTS

Carat Weight 5.25 CARATS

Color Grade E

Clarity Grade VVS 2

Cut Grade IDEAL

ADDITIONAL GRADING INFORMATION

Polish EXCELLENT

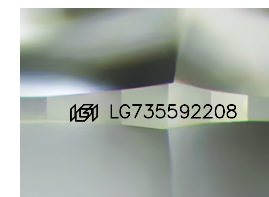
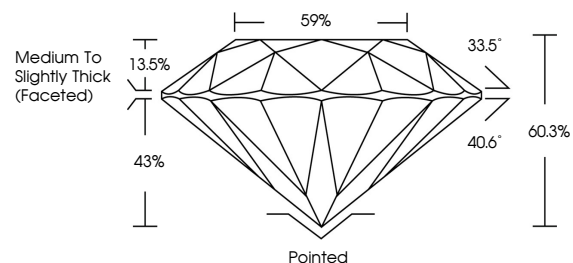
Symmetry EXCELLENT

Fluorescence NONE

Inscription(s) IGI LG735592208

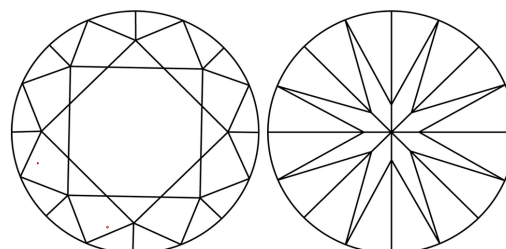
Comments: This Laboratory Grown Diamond was created by Chemical Vapor Deposition (CVD) growth process. Type IIa

PROPORTIONS



Sample Image Used

CLARITY CHARACTERISTICS



KEY TO SYMBOLS

Red symbols indicate internal characteristics. Green symbols indicate external characteristics.

COLOR

D E F G H I J Faint Very Light Light

CLARITY

IF WS 1-2 VS 1-2 SI 1-2 I 1-3

Internally Flawless Very Very Slightly Included Very Slightly Included Slightly Included Included

ADDITIONAL GRADING INFORMATION

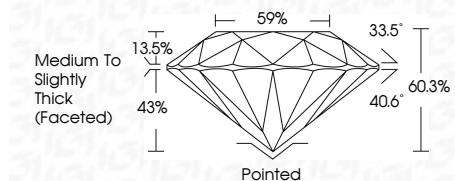
Polish EXCELLENT

Symmetry EXCELLENT

Fluorescence NONE

Inscription(s) IGI LG735592208

Comments: This Laboratory Grown Diamond was created by Chemical Vapor Deposition (CVD) growth process. Type IIa



IGI



Table with 2 columns: Property and Value. Includes: September 20, 2025, IGI Report No LG735592208, ROUND BRILLIANT, 5.25 CARATS, E, VVS 2, IDEAL, 60.3%, 59%, Medium To Slightly Thick (Faceted), Pointed, EXCELLENT, EXCELLENT, NONE, IGI LG735592208. Comments: This Laboratory Grown Diamond was created by Chemical Vapor Deposition (CVD) growth process. Type IIa