



**ELECTRONIC COPY**

**LABORATORY GROWN DIAMOND REPORT**

October 8, 2025  
IGI Report Number **LG735591544**

Description **LABORATORY GROWN DIAMOND**

Shape and Cutting Style **CUT CORNERED RECTANGULAR  
MODIFIED BRILLIANT**

Measurements **6.59 X 4.95 X 3.40 MM**

**GRADING RESULTS**

Carat Weight **1.05 CARAT**

Color Grade **FANCY LIGHT YELLOW**

Clarity Grade **VVS 2**

**ADDITIONAL GRADING INFORMATION**

Polish **EXCELLENT**

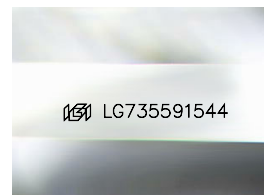
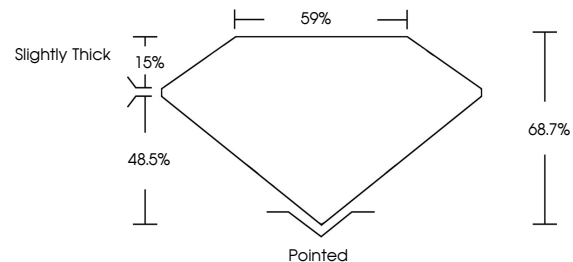
Symmetry **EXCELLENT**

Fluorescence **NONE**

Inscription(s) **IGI LG735591544**

Comments: This Laboratory Grown Diamond was created by Chemical Vapor Deposition (CVD) growth process.

**PROPORTIONS**



Sample Image Used

**COLOR**

D E F G H I J Faint Very Light Light

**CLARITY**

FL	IF	VVS <sup>1-2</sup>	VS <sup>1-2</sup>	SI <sup>1-2</sup>	I <sup>1-3</sup>
Flawless	Internally Flawless	Very Very Slightly Included	Very Slightly Included	Slightly Included	Included



October 8, 2025

IGI Report Number **LG735591544**

Description **LABORATORY GROWN DIAMOND**

Shape and Cutting Style **CUT CORNERED  
RECTANGULAR MODIFIED  
BRILLIANT**

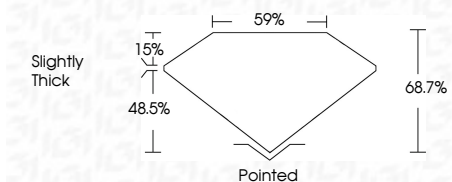
Measurements **6.59 X 4.95 X 3.40 MM**

**GRADING RESULTS**

Carat Weight **1.05 CARAT**

Color Grade **FANCY LIGHT YELLOW**

Clarity Grade **VVS 2**



**ADDITIONAL GRADING INFORMATION**

Polish **EXCELLENT**

Symmetry **EXCELLENT**

Fluorescence **NONE**

Inscription(s) **IGI LG735591544**

Comments: This Laboratory Grown Diamond was created by Chemical Vapor Deposition (CVD) growth process.



**IGI**



October 8, 2025  
IGI Report No LG735591544  
CUT CORNERED RECT. MODIFIED BRILLIANT  
6.59 X 4.95 X 3.40 MM  
1.05 CARAT  
FANCY LIGHT YELLOW  
VVS 2  
68.7%  
59%  
Slightly Thick  
Pointed  
EXCELLENT  
EXCELLENT  
NONE  
IGI LG735591544

Comments: This Laboratory Grown Diamond was created by Chemical Vapor Deposition (CVD) growth process.