



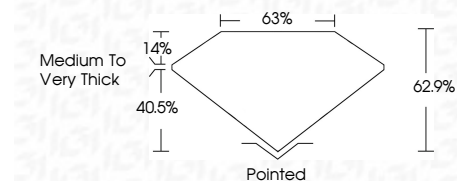
ELECTRONIC COPY

LG735590661
Report verification at igi.org



October 1, 2025
IGI Report Number **LG735590661**
Description **LABORATORY GROWN DIAMOND**
Shape and Cutting Style **HALF MOON BRILLIANT**
Measurements **8.76 X 5.72 X 3.60 MM**

GRADING RESULTS
Carat Weight **1.32 CARAT**
Color Grade **D**
Clarity Grade **VVS 1**



ADDITIONAL GRADING INFORMATION
Polish **EXCELLENT**
Symmetry **EXCELLENT**
Fluorescence **NONE**
Inscription(s) **IGI LG735590661**
Comments: This Laboratory Grown Diamond was created by Chemical Vapor Deposition (CVD) growth process. Type IIa



October 1, 2025
IGI Report No LG735590661
HALF MOON BRILLIANT
1.32 CARAT
Color Grade **D**
Clarity Grade **VVS 1**
Depth **40.5%**
Table **14%**
Girdle **Medium to Very Thick**
Culet **Pointed**
Polish **EXCELLENT**
Symmetry **EXCELLENT**
Fluorescence **NONE**
Inscription(s) **IGI LG735590661**
Comments: This Laboratory Grown Diamond was created by Chemical Vapor Deposition (CVD) growth process. Type IIa

LABORATORY GROWN DIAMOND REPORT

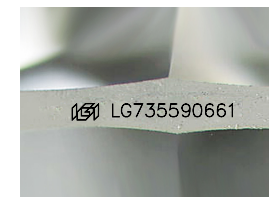
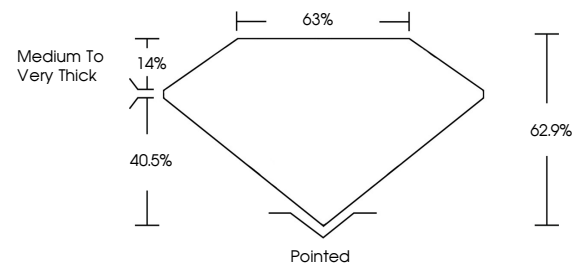
October 1, 2025
IGI Report Number **LG735590661**
Description **LABORATORY GROWN DIAMOND**
Shape and Cutting Style **HALF MOON BRILLIANT**
Measurements **8.76 X 5.72 X 3.60 MM**

GRADING RESULTS
Carat Weight **1.32 CARAT**
Color Grade **D**
Clarity Grade **VVS 1**

ADDITIONAL GRADING INFORMATION
Polish **EXCELLENT**
Symmetry **EXCELLENT**
Fluorescence **NONE**
Inscription(s) **IGI LG735590661**

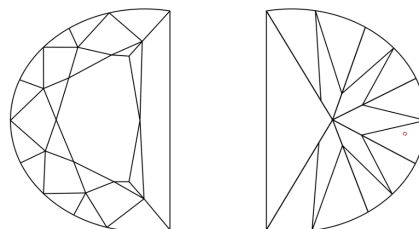
Comments: This Laboratory Grown Diamond was created by Chemical Vapor Deposition (CVD) growth process. Type IIa

PROPORTIONS



Sample Image Used

CLARITY CHARACTERISTICS



KEY TO SYMBOLS

Red symbols indicate internal characteristics.
Green symbols indicate external characteristics.

COLOR

D E F G H I J Faint Very Light Light

CLARITY

FL	IF	VVS ¹⁻²	VS ¹⁻²	SI ¹⁻²	I ¹⁻³
Flawless	Internally Flawless	Very Very Slightly Included	Very Slightly Included	Slightly Included	Included

