



**ELECTRONIC COPY**

**LABORATORY GROWN DIAMOND REPORT**

September 30, 2025  
IGI Report Number **LG735589370**  
Description **LABORATORY GROWN DIAMOND**  
Shape and Cutting Style **CUSHION MODIFIED BRILLIANT**  
Measurements **12.33 X 8.71 X 6.04 MM**

**GRADING RESULTS**

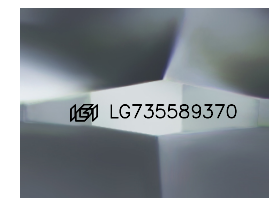
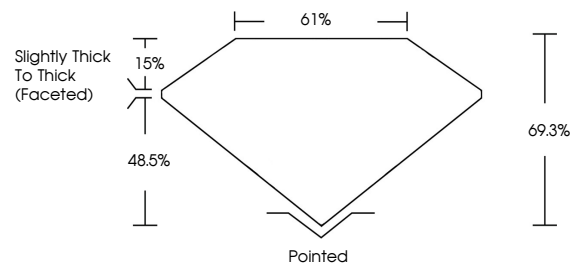
Carat Weight **6.03 CARATS**  
Color Grade **FANCY VIVID YELLOW**  
Clarity Grade **VS 1**

**ADDITIONAL GRADING INFORMATION**

Polish **EXCELLENT**  
Symmetry **EXCELLENT**  
Fluorescence **NONE**  
Inscription(s) **LG735589370**

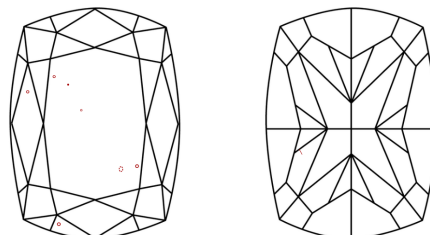
Comments: This Laboratory Grown Diamond was created by Chemical Vapor Deposition (CVD) growth process.

**PROPORTIONS**



Sample Image Used

**CLARITY CHARACTERISTICS**



**KEY TO SYMBOLS**

Red symbols indicate internal characteristics.  
Green symbols indicate external characteristics.

**COLOR**

D E F G H I J Faint Very Light Light

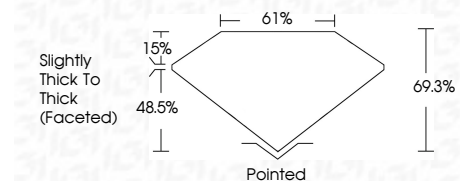
**CLARITY**

IF WS<sup>1-2</sup> VS<sup>1-2</sup> SI<sup>1-2</sup> I<sup>1-3</sup>

Internally Flawless Very Very Slightly Included Very Slightly Included Slightly Included Included



September 30, 2025  
IGI Report Number **LG735589370**  
Description **LABORATORY GROWN DIAMOND**  
Shape and Cutting Style **CUSHION MODIFIED BRILLIANT**  
Measurements **12.33 X 8.71 X 6.04 MM**  
**GRADING RESULTS**  
Carat Weight **6.03 CARATS**  
Color Grade **FANCY VIVID YELLOW**  
Clarity Grade **VS 1**



**ADDITIONAL GRADING INFORMATION**

Polish **EXCELLENT**  
Symmetry **EXCELLENT**  
Fluorescence **NONE**  
Inscription(s) **LG735589370**  
Comments: This Laboratory Grown Diamond was created by Chemical Vapor Deposition (CVD) growth process.



September 30, 2025  
IGI Report No **LG735589370**  
**CUSHION MODIFIED BRILLIANT**  
**12.33 X 8.71 X 6.04 MM**  
Carat Weight **6.03 CARATS**  
Color Grade **FANCY VIVID YELLOW**  
Clarity Grade **VS 1**  
Depth **69.3%**  
Table **61%**  
Girdle **Slightly Thick To Thick (Faceted)**  
Culet **Pointed**  
Polish **EXCELLENT**  
Symmetry **EXCELLENT**  
Fluorescence **NONE**  
Inscription(s) **LG735589370**  
Comments: This Laboratory Grown Diamond was created by Chemical Vapor Deposition (CVD) growth process.