



ELECTRONIC COPY

LG735588271
Report verification at igi.org



September 30, 2025
IGI Report Number LG735588271
Description LABORATORY GROWN DIAMOND
Shape and Cutting Style CUSHION MODIFIED BRILLIANT
Measurements 12.95 X 9.09 X 6.19 MM
GRADING RESULTS
Carat Weight 6.23 CARATS
Color Grade FANCY INTENSE YELLOW
Clarity Grade VVS 2

September 30, 2025
IGI Report Number LG735588271
Description LABORATORY GROWN DIAMOND
Shape and Cutting Style CUSHION MODIFIED BRILLIANT
Measurements 12.95 X 9.09 X 6.19 MM

GRADING RESULTS

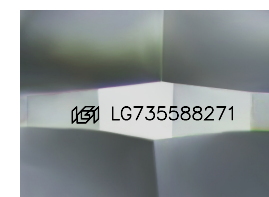
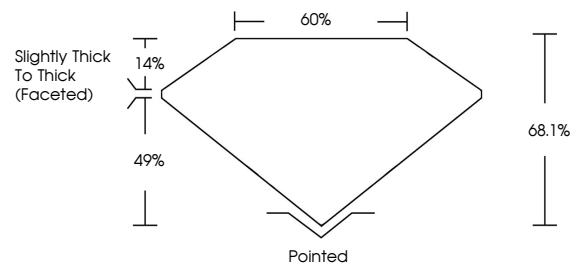
Carat Weight 6.23 CARATS
Color Grade FANCY INTENSE YELLOW
Clarity Grade VVS 2

ADDITIONAL GRADING INFORMATION

Polish EXCELLENT
Symmetry EXCELLENT
Fluorescence NONE
Inscription(s) IGI LG735588271

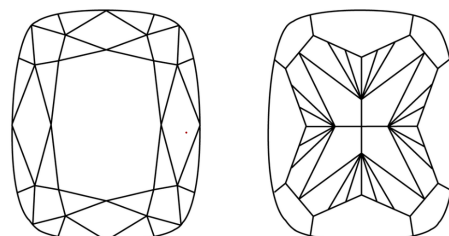
Comments: This Laboratory Grown Diamond was created by Chemical Vapor Deposition (CVD) growth process.

PROPORTIONS



Sample Image Used

CLARITY CHARACTERISTICS



KEY TO SYMBOLS

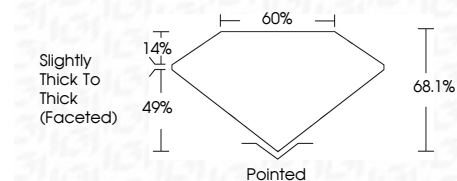
Red symbols indicate internal characteristics.
Green symbols indicate external characteristics.

COLOR

D E F G H I J Faint Very Light Light

CLARITY

IF WS 1-2 VS 1-2 SI 1-2 I 1-3
Internally Flawless Very Very Slightly Included Very Slightly Included Slightly Included Included



ADDITIONAL GRADING INFORMATION

Polish EXCELLENT
Symmetry EXCELLENT
Fluorescence NONE
Inscription(s) IGI LG735588271
Comments: This Laboratory Grown Diamond was created by Chemical Vapor Deposition (CVD) growth process.



September 30, 2025
IGI Report No LG735588271
CUSHION MODIFIED BRILLIANT
6.23 CARATS
FANCY INTENSE YELLOW
VVS 2
68.1%
60%
Slightly Thick To Thick (Faceted)
Pointed
EXCELLENT
EXCELLENT
NONE
IGI LG735588271
Comments: This Laboratory Grown Diamond was created by Chemical Vapor Deposition (CVD) growth process.