



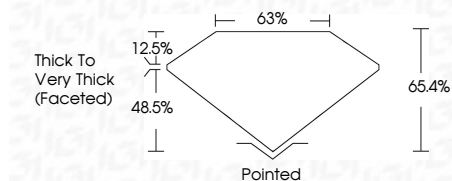
ELECTRONIC COPY

LG735588241
Report verification at igi.org



September 30, 2025
IGI Report Number **LG735588241**
Description **LABORATORY GROWN DIAMOND**
Shape and Cutting Style **SQUARE CUSHION MODIFIED BRILLIANT**
Measurements **8.22 X 8.21 X 5.37 MM**

GRADING RESULTS
Carat Weight **3.12 CARATS**
Color Grade **FANCY VIVID BLUE**
Clarity Grade **VVS 2**

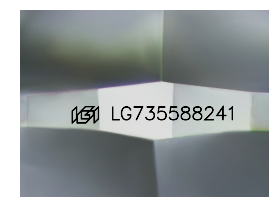


ADDITIONAL GRADING INFORMATION
Polish **EXCELLENT**
Symmetry **EXCELLENT**
Fluorescence **NONE**
Inscription(s) **IGI LG735588241**
Comments: This Laboratory Grown Diamond was created by High Pressure High Temperature (HPHT) growth process. Indications of post-growth treatment.



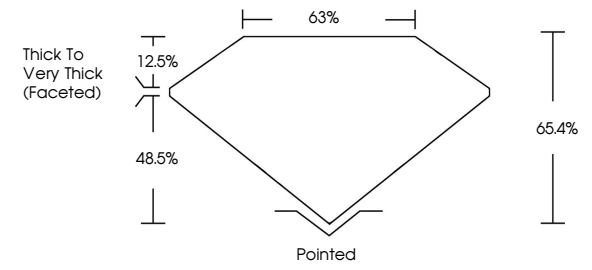
September 30, 2025
IGI Report No LG735588241
SQUARE CUSHION MODIFIED BRILLIANT
8.22 X 8.21 X 5.37 MM
3.12 CARATS
FANCY VIVID BLUE
VVS 2
65.4%
63%
Thick To Very Thick (Faceted)
Pointed
EXCELLENT
EXCELLENT
NONE
IGI LG735588241

Comments: This Laboratory Grown Diamond was created by High Pressure High Temperature (HPHT) growth process. Indications of post-growth treatment.

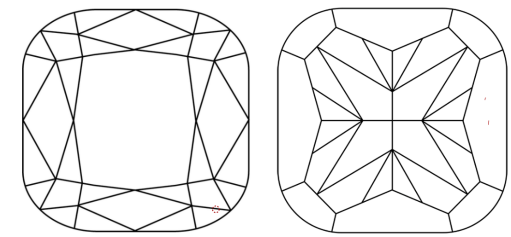


Sample Image Used

PROPORTIONS



CLARITY CHARACTERISTICS



KEY TO SYMBOLS
Red symbols indicate internal characteristics.
Green symbols indicate external characteristics.

COLOR

D	E	F	G	H	I	J	Faint	Very Light	Light
---	---	---	---	---	---	---	-------	------------	-------

CLARITY

IF	VS ¹⁻²	VS ¹⁻²	SI ¹⁻²	I ¹⁻³
Internally Flawless	Very Very Slightly Included	Very Slightly Included	Slightly Included	Included



September 30, 2025
IGI Report Number **LG735588241**
Description **LABORATORY GROWN DIAMOND**
Shape and Cutting Style **SQUARE CUSHION MODIFIED BRILLIANT**
Measurements **8.22 X 8.21 X 5.37 MM**
GRADING RESULTS
Carat Weight **3.12 CARATS**
Color Grade **FANCY VIVID BLUE**
Clarity Grade **VVS 2**
ADDITIONAL GRADING INFORMATION
Polish **EXCELLENT**
Symmetry **EXCELLENT**
Fluorescence **NONE**
Inscription(s) **IGI LG735588241**

Comments: This Laboratory Grown Diamond was created by High Pressure High Temperature (HPHT) growth process. Indications of post-growth treatment.