



ELECTRONIC COPY

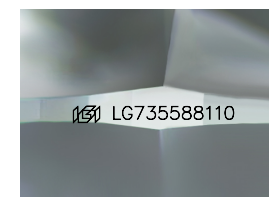
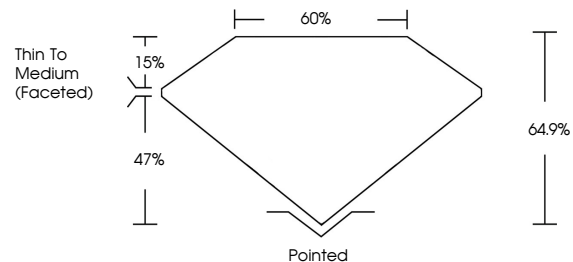
LG735588110
Report verification at igi.org



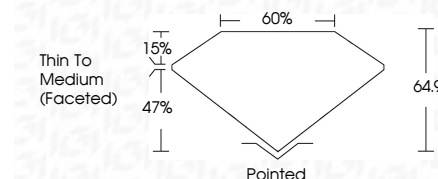
September 24, 2025
IGI Report Number **LG735588110**
Description **LABORATORY GROWN DIAMOND**
Shape and Cutting Style **SQUARE CUSHION MODIFIED BRILLIANT**
Measurements **10.68 X 10.37 X 6.73 MM**
GRADING RESULTS
Carat Weight **5.55 CARATS**
Color Grade **E**
Clarity Grade **VS 1**

September 24, 2025
IGI Report Number **LG735588110**
Description **LABORATORY GROWN DIAMOND**
Shape and Cutting Style **SQUARE CUSHION MODIFIED BRILLIANT**
Measurements **10.68 X 10.37 X 6.73 MM**
GRADING RESULTS
Carat Weight **5.55 CARATS**
Color Grade **E**
Clarity Grade **VS 1**

PROPORTIONS



Sample Image Used



ADDITIONAL GRADING INFORMATION

Polish **EXCELLENT**
Symmetry **EXCELLENT**
Fluorescence **NONE**
Inscription(s) **IGI LG735588110**

Comments: This Laboratory Grown Diamond was created by Chemical Vapor Deposition (CVD) growth process.
Type IIa

COLOR

D E F G H I J Faint Very Light Light

CLARITY

IF	WS ¹⁻²	VS ¹⁻²	SI ¹⁻²	I ¹⁻³
Internally Flawless	Very Very Slightly Included	Very Slightly Included	Slightly Included	Included

ADDITIONAL GRADING INFORMATION

Polish **EXCELLENT**
Symmetry **EXCELLENT**
Fluorescence **NONE**
Inscription(s) **IGI LG735588110**
Comments: This Laboratory Grown Diamond was created by Chemical Vapor Deposition (CVD) growth process.
Type IIa



September 24, 2025
IGI Report No **LG735588110**
SQUARE CUSHION MODIFIED BRILLIANT
5.55 CARATS
E
Color Grade **E**
Clarity Grade **VS 1**
Depth **64.9%**
Table **60%**
Girdle
Thin To Medium (Faceted)
Culet Pointed
Polish **EXCELLENT**
Symmetry **EXCELLENT**
Fluorescence **NONE**
Inscription(s) **IGI LG735588110**
Comments: This Laboratory Grown Diamond was created by Chemical Vapor Deposition (CVD) growth process.
Type IIa