



**INTERNATIONAL
GEMOLOGICAL
INSTITUTE**

ELECTRONIC COPY

LG735586490
Report verification at igi.org

LABORATORY GROWN DIAMOND REPORT



December 12, 2025

IGI Report Number **LG735586490**

Description	LABORATORY GROWN DIAMOND
-------------	--------------------------

Shape and Cutting Style **ROUND BRILLIANT**

Measurements 7.32 - 7.36 X 4.57 MM

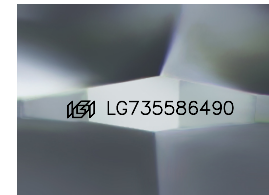
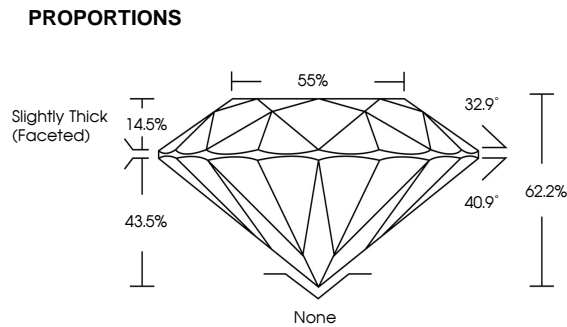
GRADING RESULTS

Carat Weight **1.52 CARAT**

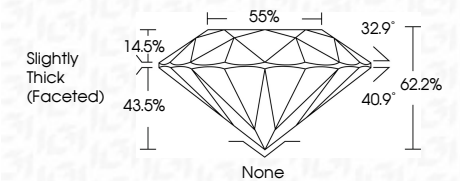
Color Grade D

Clarity Grade **VS 2**

Cut Grade **EXCELLENT**



Sample Image Used



COLOR

D E F G H I J Faint Very Light Light

CLARITY

FL IF VWS¹⁻² VS¹⁻² S¹⁻² |¹⁻³

Flawless	Internally Flawless	Very Very Slightly Included	Very Slightly Included	Slightly Included	Included
----------	------------------------	--------------------------------	---------------------------	----------------------	----------



© IGI 2020, International Gemological Institute

FD - 10 20

www.igi.org



THIS DOCUMENT WAS PRODUCED WITH THE FOLLOWING SECURITY MEASURES: SPECIAL DOCUMENT PAPER, INK SCREENS, WATERMARK, BACKGROUND DESIGNS, HOLOGRAM AND OTHER SECURITY FEATURES NOT LISTED AND DO EXCEED DOCUMENT SECURITY INDUSTRY GUIDELINES



IGI

December 12, 2025
IGI Report No LG735586490
ROUND BRILLIANT

7.32 - 7.36 X 4.57 MM
Carat Weight 1.52 CARAT

7.52 - 7.55 X 4.57 MM	1.52 CARAT
Carat Weight	
Color Grade	D

	VS 2	EXCELLENT
Clarity Grade		
Cut Grade		

Our Grade	EXCELLENT
Depth	62.2%
Table	55%

Girdle

	None	EXCELLENT
Culet		
Polish		

Symmetry	EXCELLENT
Fluorescence	NONE
Concentration (%)	4.6% (5.795596400)

Inscription(s)	Comments:

This Laboratory Grown Diamond was created by Chemical Vapor Deposition (CVD) growth process.

Type IIa