



ELECTRONIC COPY

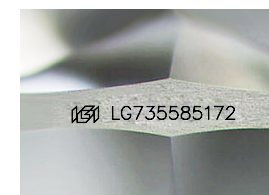
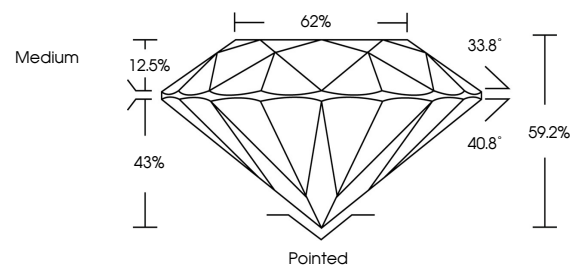
LG735585172
Report verification at igi.org



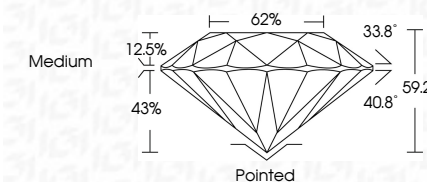
November 19, 2025
IGI Report Number **LG735585172**
Description **LABORATORY GROWN DIAMOND**
Shape and Cutting Style **ROUND BRILLIANT**
Measurements **6.65 - 6.67 X 3.95 MM**
GRADING RESULTS
Carat Weight **1.07 CARAT**
Color Grade **H**
Clarity Grade **VVS 2**
Cut Grade **EXCELLENT**

November 19, 2025
IGI Report Number **LG735585172**
Description **LABORATORY GROWN DIAMOND**
Shape and Cutting Style **ROUND BRILLIANT**
Measurements **6.65 - 6.67 X 3.95 MM**
GRADING RESULTS
Carat Weight **1.07 CARAT**
Color Grade **H**
Clarity Grade **VVS 2**
Cut Grade **EXCELLENT**

PROPORTIONS



Sample Image Used



ADDITIONAL GRADING INFORMATION

Polish **EXCELLENT**
Symmetry **EXCELLENT**
Fluorescence **NONE**
Inscription(s) **IGI LG735585172**

Comments: This Laboratory Grown Diamond was created by Chemical Vapor Deposition (CVD) growth process. Type IIa

ADDITIONAL GRADING INFORMATION

Polish **EXCELLENT**
Symmetry **EXCELLENT**
Fluorescence **NONE**
Inscription(s) **IGI LG735585172**
Comments: This Laboratory Grown Diamond was created by Chemical Vapor Deposition (CVD) growth process. Type IIa

COLOR

D E F G H I J Faint Very Light Light

CLARITY

FL	IF	VS ¹⁻²	VS ¹⁻²	SI ¹⁻²	I ¹⁻³
Flawless	Internally Flawless	Very Very Slightly Included	Very Slightly Included	Slightly Included	Included



IGI



November 19, 2025
IGI Report No **LG735585172**
ROUND BRILLIANT
6.65 - 6.67 X 3.95 MM
1.07 CARAT
Color Grade **H**
Clarity Grade **VVS 2**
Depth **59.2%**
Table **12.5%**
Girdle **Medium**
Culet **Pointed**
Polish **EXCELLENT**
Symmetry **EXCELLENT**
Fluorescence **NONE**
Inscriptions(s) **IGI LG735585172**
Comments: This Laboratory Grown Diamond was created by Chemical Vapor Deposition (CVD) growth process. Type IIa