



ELECTRONIC COPY

LG735585156
Report verification at igi.org



November 19, 2025

IGI Report Number **LG735585156**

Description **LABORATORY GROWN DIAMOND**

Shape and Cutting Style **ROUND BRILLIANT**

Measurements **6.51 - 6.51 X 4.12 MM**

GRADING RESULTS

Carat Weight **1.08 CARAT**

Color Grade **F**

Clarity Grade **VVS 2**

Cut Grade **EXCELLENT**

November 19, 2025

IGI Report Number **LG735585156**

Description **LABORATORY GROWN DIAMOND**

Shape and Cutting Style **ROUND BRILLIANT**

Measurements **6.51 - 6.51 X 4.12 MM**

GRADING RESULTS

Carat Weight **1.08 CARAT**

Color Grade **F**

Clarity Grade **VVS 2**

Cut Grade **EXCELLENT**

ADDITIONAL GRADING INFORMATION

Polish **EXCELLENT**

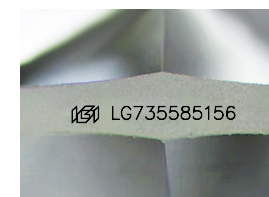
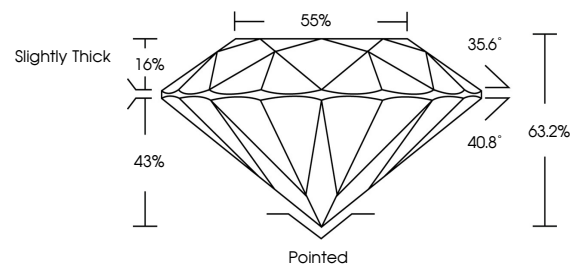
Symmetry **EXCELLENT**

Fluorescence **NONE**

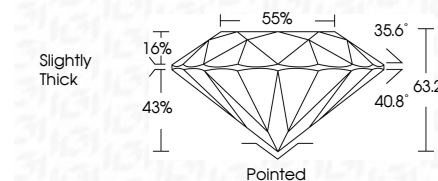
Inscription(s) **LG735585156**

Comments: This Laboratory Grown Diamond was created by Chemical Vapor Deposition (CVD) growth process. Type IIa

PROPORTIONS



Sample Image Used



COLOR

D E F G H I J Faint Very Light Light

CLARITY

FL	IF	VVS ¹⁻²	VS ¹⁻²	SI ¹⁻²	I ¹⁻³
Flawless	Internally Flawless	Very Very Slightly Included	Very Slightly Included	Slightly Included	Included

ADDITIONAL GRADING INFORMATION

Polish **EXCELLENT**

Symmetry **EXCELLENT**

Fluorescence **NONE**

Inscription(s) **LG735585156**

Comments: This Laboratory Grown Diamond was created by Chemical Vapor Deposition (CVD) growth process. Type IIa



IGI



November 19, 2025	1.08 CARAT	F	Pointed
IGI Report No LG735585156	EXCELLENT	EXCELLENT	EXCELLENT
ROUND BRILLIANT	VVS 2	EXCELLENT	EXCELLENT
6.51 - 6.51 X 4.12 MM	63.2%	85%	Slightly Thick
Carat Weight	63.2%	85%	Slightly Thick
Color Grade	EXCELLENT	EXCELLENT	EXCELLENT
Clarity Grade	VVS 2	EXCELLENT	EXCELLENT
Cut Grade	EXCELLENT	EXCELLENT	EXCELLENT
Depth	63.2%	85%	Slightly Thick
Table	85%	85%	Slightly Thick
Girdle	EXCELLENT	EXCELLENT	EXCELLENT
Culet	None	None	None
Polish	EXCELLENT	EXCELLENT	EXCELLENT
Symmetry	EXCELLENT	EXCELLENT	EXCELLENT
Fluorescence	NONE	NONE	NONE
Inscription(s)	LG735585156		

Comments: This Laboratory Grown Diamond was created by Chemical Vapor Deposition (CVD) growth process. Type IIa