



LG735585070

DIAMOND REPORT ELECTRONIC COPY

November 20, 2025
IGI Report Number LG735585070
Description LABORATORY GROWN DIAMOND
Shape and Cutting Style ROUND BRILLIANT
Measurements 6.44 - 6.46 x 4.06 mm

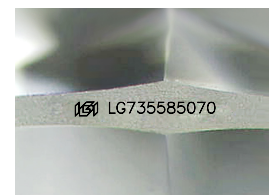
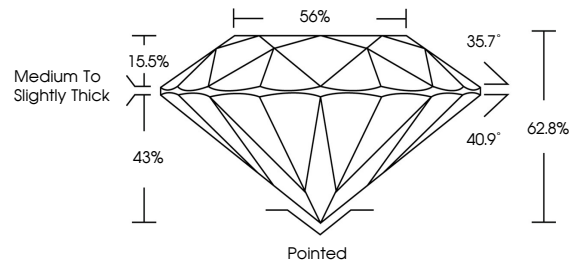
GRADING RESULTS

Carat Weight 1.05 CARAT
Color Grade E
Clarity Grade VS 2
Cut Grade EXCELLENT

ADDITIONAL GRADING INFORMATION

Polish EXCELLENT
Symmetry EXCELLENT
Fluorescence NONE
Inscription(s) IGI LG735585070
Comments: This Laboratory Grown Diamond was created by Chemical Vapor Deposition (CVD) growth process. Type IIa

PROPORTIONS



Sample Image Used

COLOR

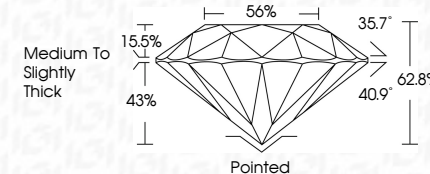
Table with 6 columns: D - F, G - J, K - M, N - R, S - Z, FANCY. Row 1: Colorless, Near Colorless, Slightly Tinted, Very Light Color, Light Color.

CLARITY

Table with 5 columns: IF, VS 1-2, VS 1-2, SI 1-2, I 1-3. Row 1: Internally Flawless, Very Very Slightly Included, Very Slightly Included, Slightly Included, Included.



November 20, 2025
IGI Report Number LG735585070
Description LABORATORY GROWN DIAMOND
Shape and Cutting Style ROUND BRILLIANT
Measurements 6.44 - 6.46 x 4.06 mm
GRADING RESULTS
Carat Weight 1.05 CARAT
Color Grade E
Clarity Grade VS 2
Cut Grade EXCELLENT



ADDITIONAL GRADING INFORMATION

Polish EXCELLENT
Symmetry EXCELLENT
Fluorescence NONE
Inscription(s) IGI LG735585070
Comments: This Laboratory Grown Diamond was created by Chemical Vapor Deposition (CVD) growth process. Type IIa



IGI

November 20, 2025
IGI Report No. LG735585070
LABORATORY GROWN DIAMOND
ROUND BRILLIANT
6.44 - 6.46 x 4.06 mm
1.05 CARAT
E
EXCELLENT
EXCELLENT
EXCELLENT
NONE
IGI LG735585070
Comments: This Laboratory Grown Diamond was created by Chemical Vapor Deposition (CVD) growth process. Type IIa