



ELECTRONIC COPY

LG735584913
Report verification at igi.org



November 20, 2025

IGI Report Number **LG735584913**

Description **LABORATORY GROWN DIAMOND**

Shape and Cutting Style **ROUND BRILLIANT**

Measurements **7.72 - 7.77 X 4.83 MM**

GRADING RESULTS

Carat Weight **1.77 CARAT**

Color Grade **F**

Clarity Grade **VVS 2**

Cut Grade **IDEAL**

November 20, 2025

IGI Report Number **LG735584913**

Description **LABORATORY GROWN DIAMOND**

Shape and Cutting Style **ROUND BRILLIANT**

Measurements **7.72 - 7.77 X 4.83 MM**

GRADING RESULTS

Carat Weight **1.77 CARAT**

Color Grade **F**

Clarity Grade **VVS 2**

Cut Grade **IDEAL**

ADDITIONAL GRADING INFORMATION

Polish **VERY GOOD**

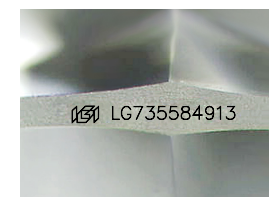
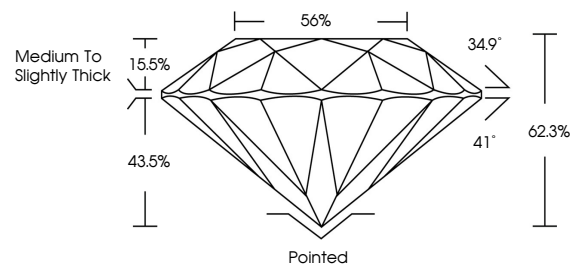
Symmetry **EXCELLENT**

Fluorescence **NONE**

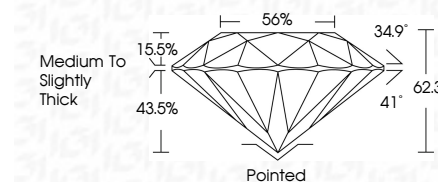
Inscription(s) **LG735584913**

Comments: This Laboratory Grown Diamond was created by Chemical Vapor Deposition (CVD) growth process. Type IIa

PROPORTIONS



Sample Image Used



COLOR

D E F G H I J Faint Very Light Light

CLARITY

FL	IF	VVS ¹⁻²	VS ¹⁻²	SI ¹⁻²	I ¹⁻³
Flawless	Internally Flawless	Very Very Slightly Included	Very Slightly Included	Slightly Included	Included

ADDITIONAL GRADING INFORMATION

Polish **VERY GOOD**

Symmetry **EXCELLENT**

Fluorescence **NONE**

Inscription(s) **LG735584913**

Comments: This Laboratory Grown Diamond was created by Chemical Vapor Deposition (CVD) growth process. Type IIa



IGI

November 20, 2025	IGI Report No LG735584913	ROUND BRILLIANT	7.72 - 7.77 X 4.83 MM	1.77 CARAT	F	VVS 2	IDEAL	62.3%	43.5%	Medium To Slightly Thick	Pointed	VERY GOOD	EXCELLENT	NONE	LG735584913
IGI	Carat Weight	Color Grade	Clarity Grade	Cut Grade	Depth	Table	Girdle	Culet	Polish	Symmetry	Fluorescence	Inscription(s)	Comments: This Laboratory Grown Diamond was created by Chemical Vapor Deposition (CVD) growth process. Type IIa		