



**ELECTRONIC COPY**

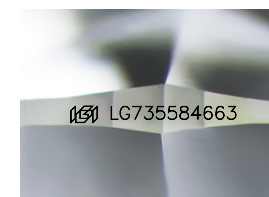
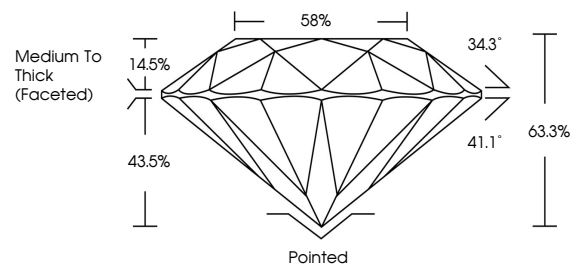
LG735584663  
Report verification at [igi.org](http://igi.org)



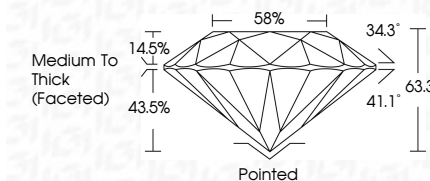
November 20, 2025  
IGI Report Number **LG735584663**  
Description **LABORATORY GROWN DIAMOND**  
Shape and Cutting Style **ROUND BRILLIANT**  
Measurements **7.69 - 7.78 X 4.90 MM**  
**GRADING RESULTS**  
Carat Weight **1.85 CARAT**  
Color Grade **F**  
Clarity Grade **SI 1**  
Cut Grade **VERY GOOD**

November 20, 2025  
IGI Report Number **LG735584663**  
Description **LABORATORY GROWN DIAMOND**  
Shape and Cutting Style **ROUND BRILLIANT**  
Measurements **7.69 - 7.78 X 4.90 MM**  
**GRADING RESULTS**  
Carat Weight **1.85 CARAT**  
Color Grade **F**  
Clarity Grade **SI 1**  
Cut Grade **VERY GOOD**

**PROPORTIONS**



Sample Image Used



**ADDITIONAL GRADING INFORMATION**  
Polish **EXCELLENT**  
Symmetry **VERY GOOD**  
Fluorescence **NONE**  
Inscription(s) **IGI LG735584663**

Comments: This Laboratory Grown Diamond was created by Chemical Vapor Deposition (CVD) growth process. Type IIa

**COLOR**

D E F G H I J Faint Very Light Light

**CLARITY**

FL	IF	VS <sup>1-2</sup>	VS <sup>1-2</sup>	SI <sup>1-2</sup>	I <sup>1-3</sup>
Flawless	Internally Flawless	Very Very Slightly Included	Very Slightly Included	Slightly Included	Included

**ADDITIONAL GRADING INFORMATION**

Polish **EXCELLENT**  
Symmetry **VERY GOOD**  
Fluorescence **NONE**  
Inscription(s) **IGI LG735584663**  
Comments: This Laboratory Grown Diamond was created by Chemical Vapor Deposition (CVD) growth process. Type IIa



**IGI**



November 20, 2025  
IGI Report No **LG735584663**  
**ROUND BRILLIANT**  
7.69 - 7.78 X 4.90 MM  
1.85 CARAT  
Color Grade **F**  
Clarity Grade **SI 1**  
Depth **63.3%**  
Table **58%**  
Girdle **Medium To Thick (Faceted)**  
Culet **Pointed**  
Polish **EXCELLENT**  
Symmetry **VERY GOOD**  
Fluorescence **NONE**  
Inscriptions(s) **IGI LG735584663**  
Comments: This Laboratory Grown Diamond was created by Chemical Vapor Deposition (CVD) growth process. Type IIa