



ELECTRONIC COPY

LG735584554
Report verification at igi.org



November 20, 2025

IGI Report Number **LG735584554**

Description **LABORATORY GROWN DIAMOND**

Shape and Cutting Style **ROUND BRILLIANT**

Measurements **8.17 - 8.18 X 5.17 MM**

GRADING RESULTS

Carat Weight **2.13 CARATS**

Color Grade **G**

Clarity Grade **VVS 2**

Cut Grade **EXCELLENT**

November 20, 2025

IGI Report Number **LG735584554**

Description **LABORATORY GROWN DIAMOND**

Shape and Cutting Style **ROUND BRILLIANT**

Measurements **8.17 - 8.18 X 5.17 MM**

GRADING RESULTS

Carat Weight **2.13 CARATS**

Color Grade **G**

Clarity Grade **VVS 2**

Cut Grade **EXCELLENT**

ADDITIONAL GRADING INFORMATION

Polish **EXCELLENT**

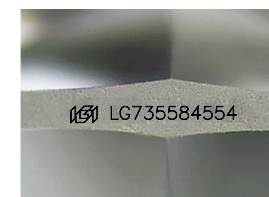
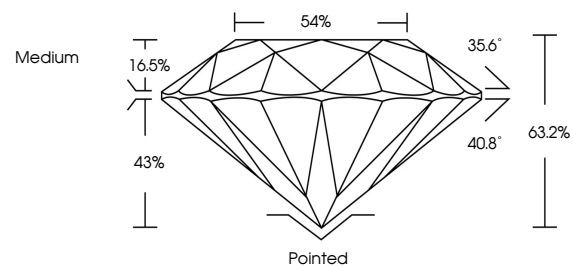
Symmetry **VERY GOOD**

Fluorescence **NONE**

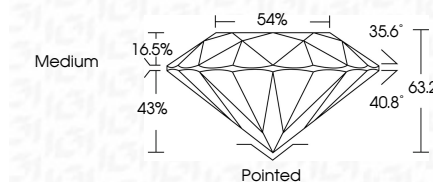
Inscription(s) **LG735584554**

Comments: This Laboratory Grown Diamond was created by Chemical Vapor Deposition (CVD) growth process. Type IIa

PROPORTIONS



Sample Image Used



COLOR

D E F G H I J Faint Very Light Light

CLARITY

FL	IF	VVS ¹⁻²	VS ¹⁻²	SI ¹⁻²	I ¹⁻³
Flawless	Internally Flawless	Very Very Slightly Included	Very Slightly Included	Slightly Included	Included

ADDITIONAL GRADING INFORMATION

Polish **EXCELLENT**

Symmetry **VERY GOOD**

Fluorescence **NONE**

Inscription(s) **LG735584554**

Comments: This Laboratory Grown Diamond was created by Chemical Vapor Deposition (CVD) growth process. Type IIa



IGI



November 20, 2025
IGI Report No LG735584554
ROUND BRILLIANT

8.17 - 8.18 X 5.17 MM
Carat Weight
Color Grade
Clarity Grade
Cut Grade
Table
Girdle
Culet
Polish
Symmetry
Fluorescence
Inscriptions(s)

2.13 CARATS
G
VVS 2
EXCELLENT
63.2%
54%
Medium
Pointed
EXCELLENT
VERY GOOD
NONE
IGI LG735584554

Comments: This Laboratory Grown Diamond was created by Chemical Vapor Deposition (CVD) growth process. Type IIa