



**ELECTRONIC COPY**

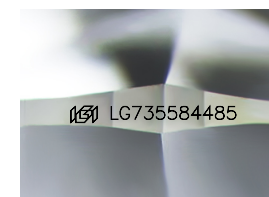
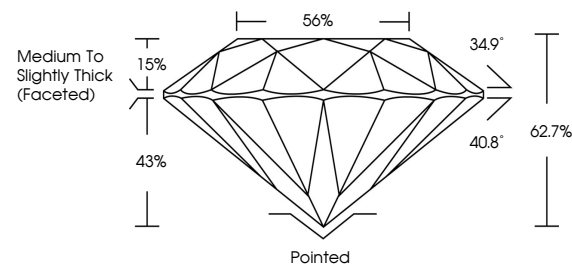
LG735584485  
Report verification at igi.org



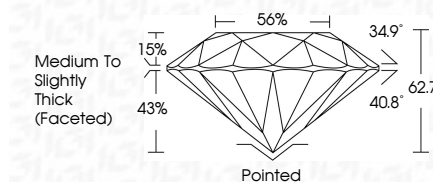
November 20, 2025  
IGI Report Number **LG735584485**  
Description **LABORATORY GROWN DIAMOND**  
Shape and Cutting Style **ROUND BRILLIANT**  
Measurements **8.14 - 8.20 X 5.13 MM**  
**GRADING RESULTS**  
Carat Weight **2.12 CARATS**  
Color Grade **D**  
Clarity Grade **VS 2**  
Cut Grade **EXCELLENT**

November 20, 2025  
IGI Report Number **LG735584485**  
Description **LABORATORY GROWN DIAMOND**  
Shape and Cutting Style **ROUND BRILLIANT**  
Measurements **8.14 - 8.20 X 5.13 MM**  
**GRADING RESULTS**  
Carat Weight **2.12 CARATS**  
Color Grade **D**  
Clarity Grade **VS 2**  
Cut Grade **EXCELLENT**

**PROPORTIONS**



Sample Image Used



**ADDITIONAL GRADING INFORMATION**  
Polish **EXCELLENT**  
Symmetry **EXCELLENT**  
Fluorescence **NONE**  
Inscription(s) **IGI LG735584485**

Comments: This Laboratory Grown Diamond was created by Chemical Vapor Deposition (CVD) growth process. Type IIa

**COLOR**

D E F G H I J Faint Very Light Light

**CLARITY**

FL	IF	VS <sup>1-2</sup>	VS <sup>1-2</sup>	SI <sup>1-2</sup>	I <sup>1-3</sup>
Flawless	Internally Flawless	Very Very Slightly Included	Very Slightly Included	Slightly Included	Included

**ADDITIONAL GRADING INFORMATION**

Polish **EXCELLENT**  
Symmetry **EXCELLENT**  
Fluorescence **NONE**  
Inscription(s) **IGI LG735584485**  
Comments: This Laboratory Grown Diamond was created by Chemical Vapor Deposition (CVD) growth process. Type IIa



**IGI**



November 20, 2025  
IGI Report No LG735584485  
**ROUND BRILLIANT**  
8.14 - 8.20 X 5.13 MM  
2.12 CARATS  
Color Grade **D**  
Clarity Grade **VS 2**  
Depth **62.7%**  
Table **56%**  
Girdle **Medium To Slightly Thick (Faceted)**  
Culet **Pointed**  
Polish **EXCELLENT**  
Symmetry **EXCELLENT**  
Fluorescence **NONE**  
Inscriptions(s) **IGI LG735584485**  
Comments: This Laboratory Grown Diamond was created by Chemical Vapor Deposition (CVD) growth process. Type IIa