



ELECTRONIC COPY

LG735582999
Report verification at igi.org



September 23, 2025
IGI Report Number **LG735582999**
Description **LABORATORY GROWN DIAMOND**
Shape and Cutting Style **MODIFIED OCTAGON STEP CUT**
Measurements **9.14 X 9.02 X 6.18 MM**
GRADING RESULTS
Carat Weight **4.38 CARATS**
Color Grade **E**
Clarity Grade **VVS 1**

LABORATORY GROWN DIAMOND REPORT

September 23, 2025
IGI Report Number **LG735582999**
Description **LABORATORY GROWN DIAMOND**
Shape and Cutting Style **MODIFIED OCTAGON STEP CUT**
Measurements **9.14 X 9.02 X 6.18 MM**

GRADING RESULTS

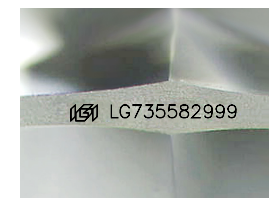
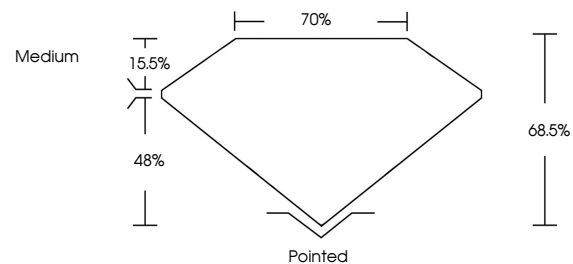
Carat Weight **4.38 CARATS**
Color Grade **E**
Clarity Grade **VVS 1**

ADDITIONAL GRADING INFORMATION

Polish **EXCELLENT**
Symmetry **EXCELLENT**
Fluorescence **NONE**
Inscription(s) **IGI LG735582999**

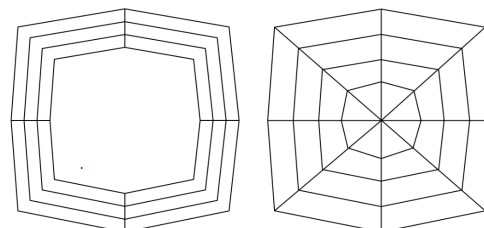
Comments: This Laboratory Grown Diamond was created by Chemical Vapor Deposition (CVD) growth process.
Type IIa

PROPORTIONS



Sample Image Used

CLARITY CHARACTERISTICS



KEY TO SYMBOLS

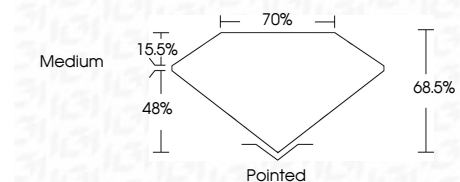
Red symbols indicate internal characteristics.
Green symbols indicate external characteristics.

COLOR

D E F G H I J Faint Very Light Light

CLARITY

IF	WS ¹⁻²	VS ¹⁻²	SI ¹⁻²	I ¹⁻³
Internally Flawless	Very Very Slightly Included	Very Slightly Included	Slightly Included	Included



ADDITIONAL GRADING INFORMATION

Polish **EXCELLENT**
Symmetry **EXCELLENT**
Fluorescence **NONE**
Inscription(s) **IGI LG735582999**
Comments: This Laboratory Grown Diamond was created by Chemical Vapor Deposition (CVD) growth process.
Type IIa



IGI



September 23, 2025
IGI Report No LG735582999
MODIFIED OCTAGON STEP CUT

9.14 X 9.02 X 6.18 MM
4.38 CARATS
E
VVS 1
48.0%
70%
Medium
Pointed
EXCELLENT
EXCELLENT
NONE
IGI LG735582999

Comments: This Laboratory Grown Diamond was created by Chemical Vapor Deposition (CVD) growth process.
Type IIa