



ELECTRONIC COPY

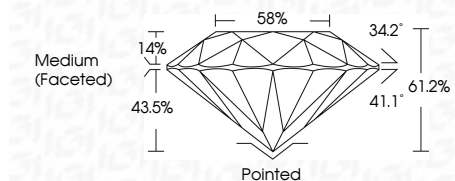
LG735582391
Report verification at igi.org



September 23, 2025
IGI Report Number LG735582391
Description LABORATORY GROWN DIAMOND
Shape and Cutting Style ROUND BRILLIANT
Measurements 9.25 - 9.31 X 5.68 MM

GRADING RESULTS

Carat Weight 3.01 CARATS
Color Grade E
Clarity Grade VS 2
Cut Grade IDEAL

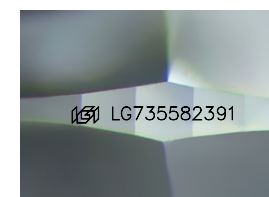


ADDITIONAL GRADING INFORMATION

Polish EXCELLENT
Symmetry EXCELLENT
Fluorescence NONE
Inscription(s) IGI LG735582391
Comments: This Laboratory Grown Diamond was created by Chemical Vapor Deposition (CVD) growth process. Type IIa

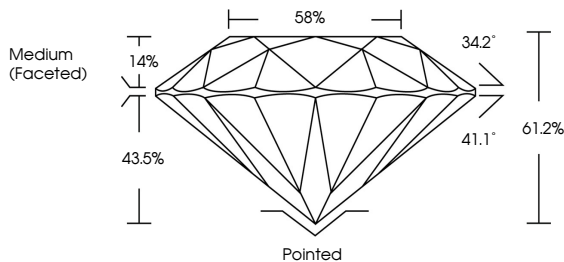


September 23, 2025
IGI Report No LG735582391
ROUND BRILLIANT
3.01 CARATS
E
9.25 - 9.31 X 5.68 MM
Color Grade E
Clarity Grade VS 2
Depth 61.2%
Table 14%
Girdle 58%
Medium (Faceted)
Cutler Pointed
Polish EXCELLENT
Symmetry EXCELLENT
Fluorescence NONE
Inscription(s) IGI LG735582391
Comments: This Laboratory Grown Diamond was created by Chemical Vapor Deposition (CVD) growth process. Type IIa

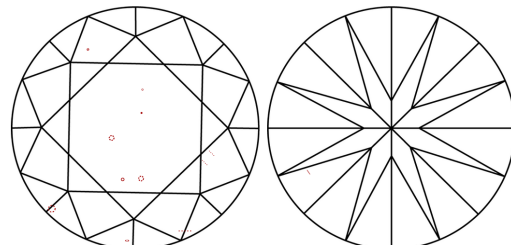


Sample Image Used

PROPORTIONS



CLARITY CHARACTERISTICS



KEY TO SYMBOLS

Red symbols indicate internal characteristics.
Green symbols indicate external characteristics.

COLOR

Table with columns D, E, F, G, H, I, J, Faint, Very Light, Light

CLARITY

Table with columns IF, WS 1-2, VS 1-2, SI 1-2, I 1-3, Internally Flawless, Very Very Slightly Included, Very Slightly Included, Slightly Included, Included

