



ELECTRONIC COPY

LG735575865
Report verification at igi.org



September 20, 2025
IGI Report Number **LG735575865**
Description **LABORATORY GROWN DIAMOND**

Shape and Cutting Style **CUT CORNERED
RECTANGULAR MODIFIED
BRILLIANT**

Measurements **10.62 X 7.20 X 4.65 MM**

GRADING RESULTS

Carat Weight **3.03 CARATS**
Color Grade **D**
Clarity Grade **INTERNALLY FLAWLESS**

LABORATORY GROWN DIAMOND REPORT

September 20, 2025
IGI Report Number **LG735575865**
Description **LABORATORY GROWN DIAMOND**
Shape and Cutting Style **CUT CORNERED RECTANGULAR
MODIFIED BRILLIANT**
Measurements **10.62 X 7.20 X 4.65 MM**

GRADING RESULTS

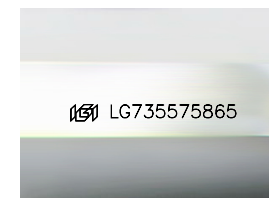
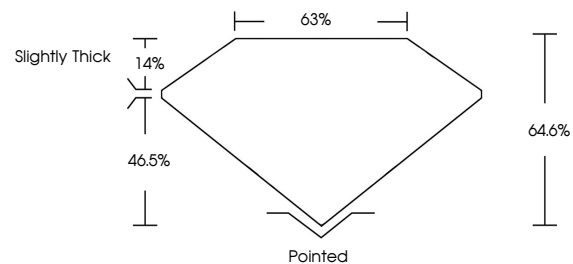
Carat Weight **3.03 CARATS**
Color Grade **D**
Clarity Grade **INTERNALLY FLAWLESS**

ADDITIONAL GRADING INFORMATION

Polish **EXCELLENT**
Symmetry **EXCELLENT**
Fluorescence **NONE**
Inscription(s) **IGI LG735575865**

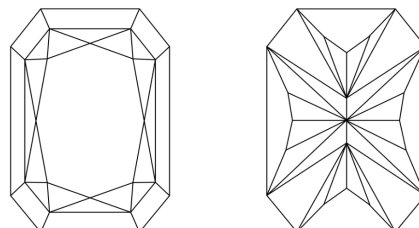
Comments: As Grown - No indication of post-growth treatment.
This Laboratory Grown Diamond was created by High Pressure High Temperature (HPHT) growth process.
Type II

PROPORTIONS



Sample Image Used

CLARITY CHARACTERISTICS



KEY TO SYMBOLS

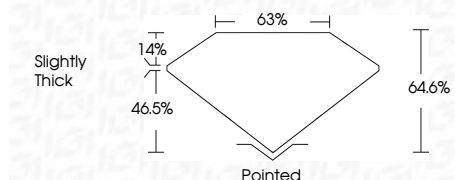
Red symbols indicate internal characteristics.
Green symbols indicate external characteristics.

COLOR

D E F G H I J Faint Very Light Light

CLARITY

IF	VS ¹⁻²	VS ¹⁻²	SI ¹⁻²	I ¹⁻³
Internally Flawless	Very Very Slightly Included	Very Slightly Included	Slightly Included	Included



ADDITIONAL GRADING INFORMATION

Polish **EXCELLENT**
Symmetry **EXCELLENT**
Fluorescence **NONE**
Inscription(s) **IGI LG735575865**
Comments: As Grown - No indication of post-growth treatment.
This Laboratory Grown Diamond was created by High Pressure High Temperature (HPHT) growth process.
Type II



IGI



September 20, 2025
IGI Report No LG735575865
CUT CORNERED RECT. MODIFIED BRILLIANT
3.03 CARATS
D
LF
64.6%
63%
Slightly Thick
Pointed
EXCELLENT
EXCELLENT
NONE
IGI LG735575865
Comments: As Grown - No indication of post-growth treatment.
This Laboratory Grown Diamond was created by High Pressure High Temperature (HPHT) growth process.
Type II