



**ELECTRONIC COPY**

LG735575819  
Report verification at igi.org



September 20, 2025

IGI Report Number **LG735575819**

Description **LABORATORY GROWN DIAMOND**

Shape and Cutting Style **CUT CORNERED  
RECTANGULAR MODIFIED  
BRILLIANT**

Measurements **10.65 X 7.13 X 4.68 MM**

**GRADING RESULTS**

Carat Weight **3.01 CARATS**

Color Grade **D**

Clarity Grade **VVS 1**

**LABORATORY GROWN DIAMOND REPORT**

September 20, 2025

IGI Report Number **LG735575819**

Description **LABORATORY GROWN DIAMOND**

Shape and Cutting Style **CUT CORNERED RECTANGULAR  
MODIFIED BRILLIANT**

Measurements **10.65 X 7.13 X 4.68 MM**

**GRADING RESULTS**

Carat Weight **3.01 CARATS**

Color Grade **D**

Clarity Grade **VVS 1**

**ADDITIONAL GRADING INFORMATION**

Polish **EXCELLENT**

Symmetry **EXCELLENT**

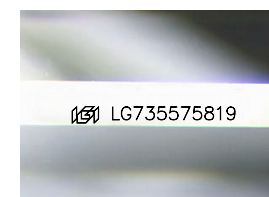
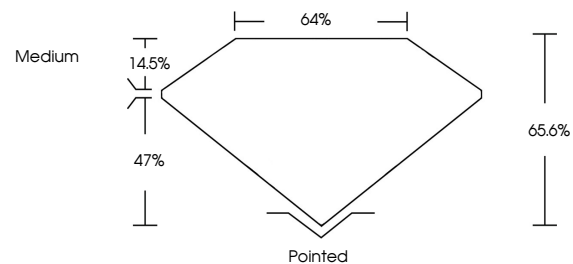
Fluorescence **NONE**

Inscription(s) **IGI LG735575819**

Comments: As Grown - No indication of post-growth treatment.

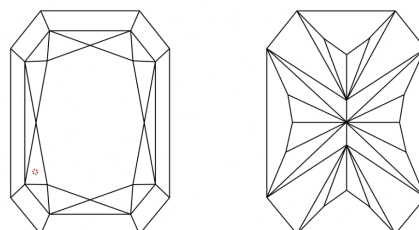
This Laboratory Grown Diamond was created by High Pressure High Temperature (HPHT) growth process. Type II

**PROPORTIONS**



Sample Image Used

**CLARITY CHARACTERISTICS**



**KEY TO SYMBOLS**

Red symbols indicate internal characteristics.  
Green symbols indicate external characteristics.

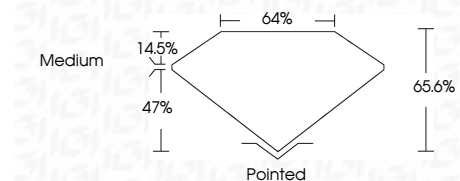
**COLOR**

D E F G H I J Faint Very Light Light

**CLARITY**

IF VS<sup>1-2</sup> VS<sup>1-2</sup> SI<sup>1-2</sup> I<sup>1-3</sup>

Internally Flawless Very Very Slightly Included Very Slightly Included Slightly Included Included



**ADDITIONAL GRADING INFORMATION**

Polish **EXCELLENT**

Symmetry **EXCELLENT**

Fluorescence **NONE**

Inscription(s) **IGI LG735575819**

Comments: As Grown - No indication of post-growth treatment.

This Laboratory Grown Diamond was created by High Pressure High Temperature (HPHT) growth process. Type II



**IGI**



|                    |                           |                                       |             |   |       |       |     |        |         |           |           |      |                 |
|--------------------|---------------------------|---------------------------------------|-------------|---|-------|-------|-----|--------|---------|-----------|-----------|------|-----------------|
| September 20, 2025 | IGI Report No LG735575819 | CUT CORNERED RECT. MODIFIED BRILLIANT | 3.01 CARATS | D | VVS 1 | 65.6% | 64% | Medium | Pointed | EXCELLENT | EXCELLENT | NONE | IGI LG735575819 |
| IGI Report No      | IGI Report No             | CUT CORNERED RECT. MODIFIED BRILLIANT | 3.01 CARATS | D | VVS 1 | 65.6% | 64% | Medium | Pointed | EXCELLENT | EXCELLENT | NONE | IGI LG735575819 |
| IGI Report No      | IGI Report No             | CUT CORNERED RECT. MODIFIED BRILLIANT | 3.01 CARATS | D | VVS 1 | 65.6% | 64% | Medium | Pointed | EXCELLENT | EXCELLENT | NONE | IGI LG735575819 |

Comments: As Grown - No indication of post-growth treatment. This Laboratory Grown Diamond was created by High Pressure High Temperature (HPHT) growth process. Type II