



**ELECTRONIC COPY**

LG735571401  
Report verification at igi.org



September 29, 2025

IGI Report Number **LG735571401**

Description **LABORATORY GROWN DIAMOND**

Shape and Cutting Style **EMERALD CUT**

Measurements **9.23 X 6.20 X 4.30 MM**

**GRADING RESULTS**

Carat Weight **2.49 CARATS**

Color Grade **FANCY VIVID BLUE**

Clarity Grade **VS 1**

September 29, 2025  
IGI Report Number **LG735571401**  
Description **LABORATORY GROWN DIAMOND**  
Shape and Cutting Style **EMERALD CUT**  
Measurements **9.23 X 6.20 X 4.30 MM**

**GRADING RESULTS**

Carat Weight **2.49 CARATS**

Color Grade **FANCY VIVID BLUE**

Clarity Grade **VS 1**

**ADDITIONAL GRADING INFORMATION**

Polish **EXCELLENT**

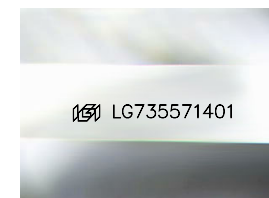
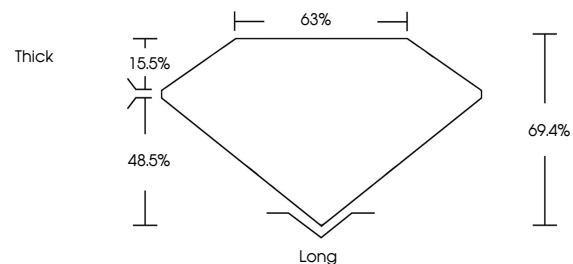
Symmetry **EXCELLENT**

Fluorescence **NONE**

Inscription(s) **IGI LG735571401**

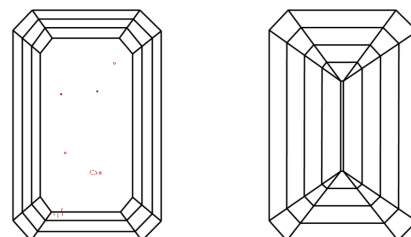
Comments: This Laboratory Grown Diamond was created by Chemical Vapor Deposition (CVD) growth process. Indications of post-growth treatment.

**PROPORTIONS**



Sample Image Used

**CLARITY CHARACTERISTICS**



**KEY TO SYMBOLS**

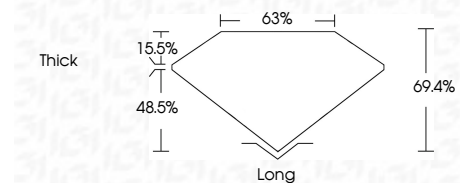
Red symbols indicate internal characteristics.  
Green symbols indicate external characteristics.

**COLOR**

D E F G H I J Faint Very Light Light

**CLARITY**

IF	VS <sup>1-2</sup>	VS <sup>1-2</sup>	SI <sup>1-2</sup>	I <sup>1-3</sup>
Internally Flawless	Very Very Slightly Included	Very Slightly Included	Slightly Included	Included



**ADDITIONAL GRADING INFORMATION**

Polish **EXCELLENT**

Symmetry **EXCELLENT**

Fluorescence **NONE**

Inscription(s) **IGI LG735571401**

Comments: This Laboratory Grown Diamond was created by Chemical Vapor Deposition (CVD) growth process. Indications of post-growth treatment.



September 29, 2025  
IGI Report No LG735571401  
**EMERALD CUT**

**2.49 CARATS**  
Carat Weight  
**FANCY VIVID BLUE**  
Color Grade

**VS 1**  
Clarity Grade

**69.4%**  
Depth

**63%**  
Table

**Thick**  
Girdle

**Long**  
Culet

**EXCELLENT**  
Polish

**EXCELLENT**  
Symmetry

**NONE**  
Fluorescence

**IGI LG735571401**  
Inscription(s)

Comments: This Laboratory Grown Diamond was created by Chemical Vapor Deposition (CVD) growth process. Indications of post-growth treatment.