



ELECTRONIC COPY

LG735569820
Report verification at igi.org



September 20, 2025

IGI Report Number **LG735569820**

Description **LABORATORY GROWN DIAMOND**

Shape and Cutting Style **SQUARE EMERALD CUT**

Measurements **5.74 X 5.61 X 3.64 MM**

GRADING RESULTS

Carat Weight **1.14 CARAT**

Color Grade **D**

Clarity Grade **VVS 2**

September 20, 2025
IGI Report Number **LG735569820**
Description **LABORATORY GROWN DIAMOND**
Shape and Cutting Style **SQUARE EMERALD CUT**
Measurements **5.74 X 5.61 X 3.64 MM**

GRADING RESULTS

Carat Weight **1.14 CARAT**

Color Grade **D**

Clarity Grade **VVS 2**

ADDITIONAL GRADING INFORMATION

Polish **EXCELLENT**

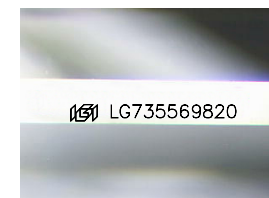
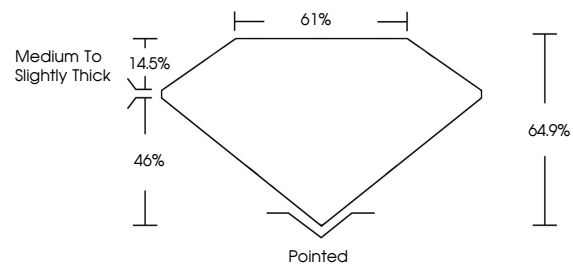
Symmetry **EXCELLENT**

Fluorescence **NONE**

Inscription(s) **IGI LG735569820**

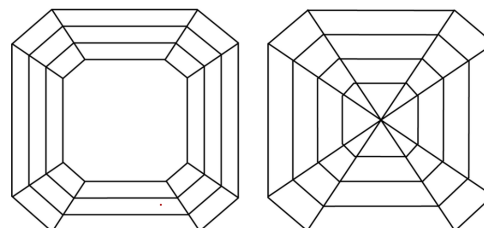
Comments: This Laboratory Grown Diamond was created by Chemical Vapor Deposition (CVD) growth process. Type IIa

PROPORTIONS



Sample Image Used

CLARITY CHARACTERISTICS



KEY TO SYMBOLS

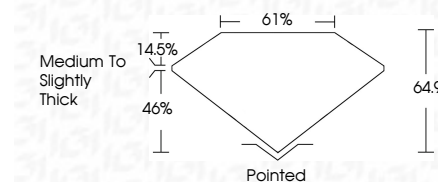
Red symbols indicate internal characteristics.
Green symbols indicate external characteristics.

COLOR

D E F G H I J Faint Very Light Light

CLARITY

IF	VS ¹⁻²	VS ¹⁻²	SI ¹⁻²	I ¹⁻³
Internally Flawless	Very Very Slightly Included	Very Slightly Included	Slightly Included	Included



ADDITIONAL GRADING INFORMATION

Polish **EXCELLENT**

Symmetry **EXCELLENT**

Fluorescence **NONE**

Inscription(s) **IGI LG735569820**

Comments: This Laboratory Grown Diamond was created by Chemical Vapor Deposition (CVD) growth process. Type IIa



IGI



September 20, 2025
IGI Report No LG735569820
SQUARE EMERALD CUT
1.14 CARAT
D
Color Grade
VS 2
Carat Weight
5.74 X 5.61 X 3.64 MM
Depth
64.9%
Table
61%
Girdle
Medium to Slightly Thick
Culet
Pointed
Polish
EXCELLENT
Symmetry
EXCELLENT
Fluorescence
NONE
Inscription(s)
IGI LG735569820
Comments: This Laboratory Grown Diamond was created by Chemical Vapor Deposition (CVD) growth process. Type IIa