



INTERNATIONAL GEMOLOGICAL INSTITUTE

LABORATORY GROWN DIAMOND REPORT

September 23, 2025

IGI Report Number

LG735567107

Description

LABORATORY GROWN DIAMOND

Shape and Cutting Style

HEXAGONAL MODIFIED STEP CUT

Measurements

6.24 X 3.75 X 2.13 MM

GRADING RESULTS

Carat Weight

0.37 CARAT

Color Grade

F

Clarity Grade

VVS 2

ADDITIONAL GRADING INFORMATION

Polish

EXCELLENT

Symmetry

EXCELLENT

Fluorescence

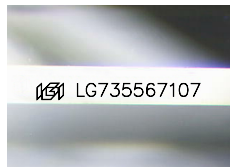
NONE

Inscription(s)

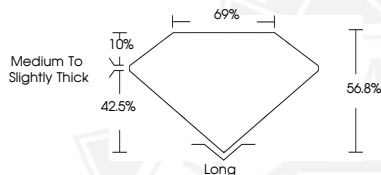
IGI LG735567107

Comments: This Laboratory Grown Diamond was created by Chemical Vapor Deposition (CVD) growth process.
Type IIa

ELECTRONIC COPY



Sample Image Used



THIS DOCUMENT WAS PRODUCED WITH THE FOLLOWING SECURITY MEASURES: SPECIAL DOCUMENT PAPER, INK SCREENS, WATERMARK, BACKGROUND DESIGNS, HOLOGRAM AND OTHER SECURITY FEATURES NOT LISTED AND DO EXCEED DOCUMENT SECURITY INDUSTRY GUIDELINES.

For terms & conditions and to verify this report, please visit www.igi.org



September 23, 2025

IGI Report Number LG735567107

HEXAGONAL MODIFIED STEP CUT

LABORATORY GROWN DIAMOND

6.24 X 3.75 X 2.13 MM

Carat Weight 0.37 CARAT

Color Grade F

Clarity Grade VVS 2

Polish EXCELLENT

Symmetry EXCELLENT

Fluorescence NONE

Inscription(s) IGI LG735567107

Comments: This Laboratory Grown Diamond was created by Chemical Vapor Deposition (CVD) growth process. Type IIa



September 23, 2025

IGI Report Number LG735567107

HEXAGONAL MODIFIED STEP CUT

LABORATORY GROWN DIAMOND

6.24 X 3.75 X 2.13 MM

Carat Weight 0.37 CARAT

Color Grade F

Clarity Grade VVS 2

Polish EXCELLENT

Symmetry EXCELLENT

Fluorescence NONE

Inscription(s) IGI LG735567107

Comments: This Laboratory Grown Diamond was created by Chemical Vapor Deposition (CVD) growth process. Type IIa